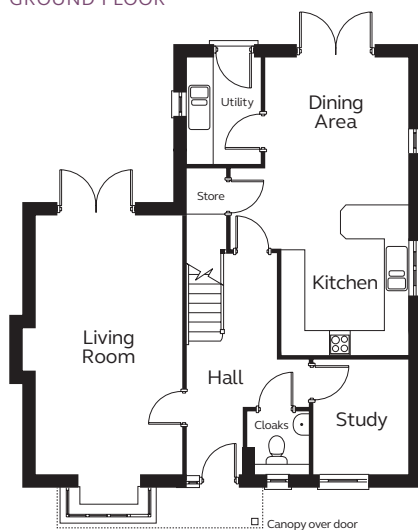


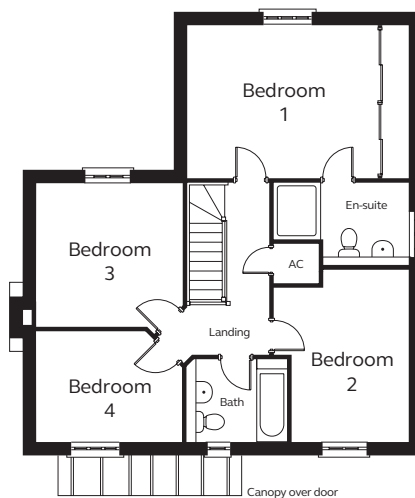


Typical CGI, not site specific.

GROUND FLOOR



FIRST FLOOR



The Morris is an imposing four bedroom detached house.

To the ground floor is an open plan kitchen / dining room, separate utility, living room, study and cloakroom.

The first floor comprises family bathroom, and four bedrooms including en-suite to master bedroom.

Ground Floor

Kitchen / Dining Area
7.05m x 3.42m (max)
3.03m (min)

Living Room
3.22m x 3.14m

Study
2.74m x 2.24m

Utility
1.76m x 2.52m

Cloakroom
1.28m x 1.50m

First Floor

Bedroom 1
5.25m x 3.67m
incl. wardrobe

En-suite
1.98m x 3.18m

Bedroom 2
4.08m x 3.18m (max)
2.29m (min)

Bedroom 3
3.83m x 2.89m

Bedroom 4
3.44m x 2.89m

Bathroom
2.34m x 1.79m

Please note

Kitchen layouts are indicative only.

Plots will vary in design and include a bay window, please check with sales executive.