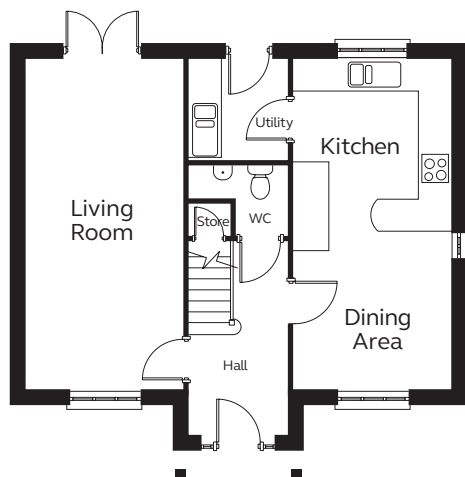


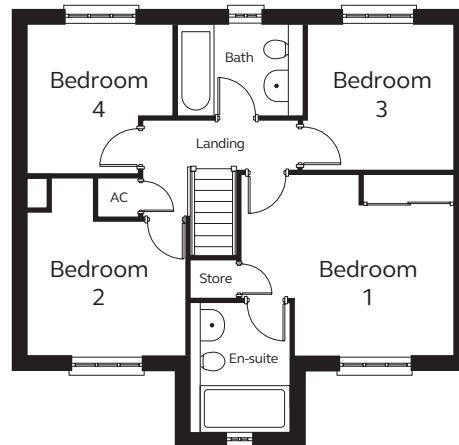


Typical CGI, not site specific.

GROUND FLOOR



FIRST FLOOR



A spacious four bedroom detached house.

From the entrance hall you have an open plan kitchen / dining room leading to utility room.

A separate living room and cloakroom are also on the ground floor.

The first floor comprises family bathroom and four bedrooms, master with en-suite.

Ground Floor

Kitchen / Dining Area
6.59m x 3.16m

Living Room
6.59m x 3.16m

Utility
1.97m x 2.03m

Cloakroom
1.97m x 1.45m

First Floor

Bedroom 1
3.66m x 4.19m
(max) 3.21m (min)
incl. wardrobe

En-suite
1.97m x 2.54m

Bedroom 2
3.21m x 2.74m

Bedroom 3
2.91m x 2.86m

Bedroom 4
2.89m x 2.93m

Bathroom
2.57m x 1.77m

Please note
Kitchen layouts
are indicative only,
please talk to us
for full details.