

# Rivel's Green

Cullompton

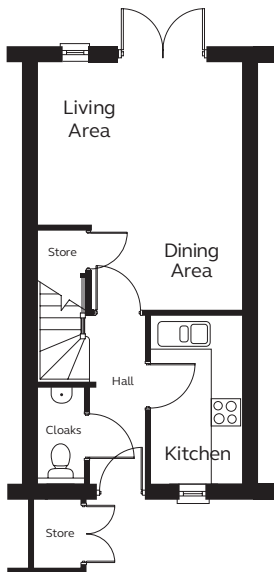
# TAVY

## 2 BH

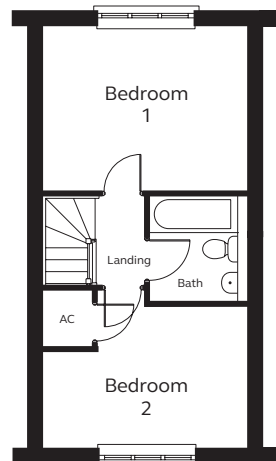


Typical CGI, not site specific.

### GROUND FLOOR



### FIRST FLOOR



A superb two bedroom house offering separate kitchen, living / dining room with French doors opening onto the rear garden, and cloakroom to ground floor.

Two double bedrooms and family bathroom to first floor.

#### Ground Floor

Kitchen  
3.20m x 1.76m  
Living Area / Dining Area  
3.90m (max) 2.92m (min) x 4.73m (max) 3.13m (min)  
Cloakroom  
1.24m x 1.83m

#### First Floor

Bedroom 1  
3.90m x 3.14m  
Bedroom 2  
3.90m (max) 2.78m (min) x 2.69m (max) 1.83m (min)  
Bathroom  
2.03m x 1.97m

Please note  
Kitchen layouts are indicative only, please talk to us for full details.

**DEVON  
SHIRE  
HOMES**



SINCE 1992

**Talk to us 01884 220088 [devonshirehomes.co.uk](http://devonshirehomes.co.uk)**

Devonshire Homes endeavours to provide accurate and reliable sales details in order to provide purchasers with a valid representation of the finished houses. However, during the process of construction alterations may become necessary and various changes and improvements can occur. Dimensions should be used as a guide only and should not be used to order carpets or furniture and customers should satisfy themselves of the actual dimensions of the property they are purchasing. Elevations, materials, style and position of windows and porches can all differ in the same house type from plot to plot. Purchasers should ensure that they are aware of the detail and finish provided in a specific plot before committing to a purchase.