

Tarka View
Crediton

COPPLESTONE
E 3



Tarka View

Crediton



SINCE 1992

DEVON
SHIRE
HOMES

COPPLESTONE

3 FH

A stylish 3 bedroom town house design benefiting from an integral garage and a first floor kitchen and dining area that opens onto the rear garden via the French doors.

GROUND FLOOR

Store 1.90m x 1.10m
(with stair bulkhead)

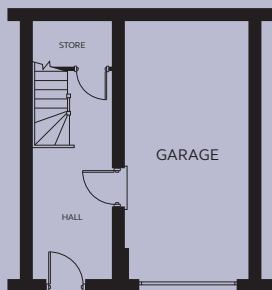
FIRST FLOOR

Kitchen/Dining 5.11m x 3.07m
Living Room 5.25m x 3.04m
Cloakroom 1.04 – 2.04m x
0.97 – 1.94m

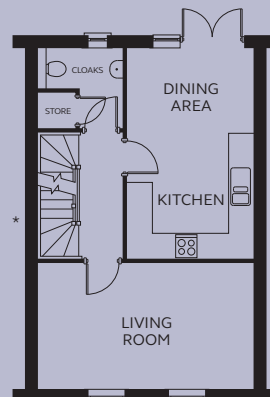
SECOND FLOOR

Bedroom 1 2.77 – 3.14m x 4.20m
(inc wardrobe space)
En-suite 3.14m x 1.00m
Bedroom 2 2.74 – 3.14m x 2.92m
Bedroom 3 2.40m x 3.08m
Bathroom 2.43m x 1.88m

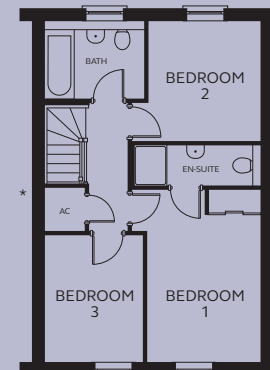
* Window to selected plots.



GROUND FLOOR



FIRST FLOOR



SECOND FLOOR

Devonshire Homes endeavours to provide accurate and reliable sales details in order to provide purchasers with a valid representation of the finished houses. However, during the process of construction, alterations may become necessary and various changes and improvements can occur. Dimensions should be used as a guide only and should not be used to order carpets or furniture and customers should satisfy themselves of the actual dimensions of the property they are purchasing. Elevations, materials, style and position of windows and porches can all differ in the same house type from plot to plot. Purchasers should ensure that they are aware of the detail and finish provided in a specific plot before committing to a purchase.

tarkaview@
devonshirehomes.co.uk