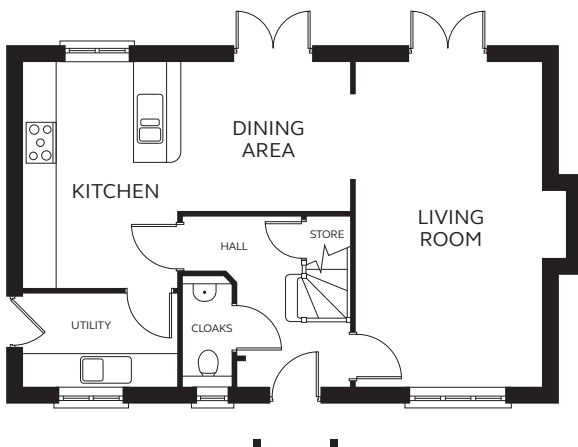




CGI shows plot 60

GROUND FLOOR



A well-proportioned 4 bedroom house with a large open plan kitchen, dining area, a living room and separate utility room with external access. Two sets of French doors open onto the garden.

Master bedroom with en-suite and fitted wardrobes.

GROUND FLOOR

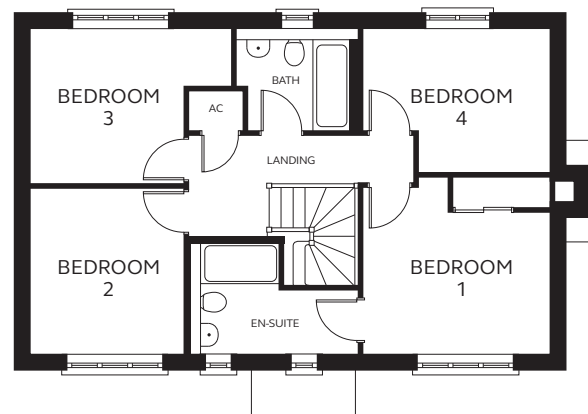
Kitchen/Dining
2.85 – 6.10m x
2.86 – 4.56m

Living Room
3.45m x 6.38m

Utility
2.85m x 1.73m

Cloakroom
0.90m x 1.71m

FIRST FLOOR



FIRST FLOOR

Bedroom 1
3.45m x 3.30m
(inc wardrobe space)

En-suite
1.47 – 3.10m x
1.37 – 2.32m

Bedroom 2
2.85m x 3.31m

Bedroom 3
2.85 – 3.75m x
1.08 – 2.98m

Bedroom 4
2.41 – 3.45m x
1.90 – 2.99m

Bathroom
2.06 – 2.26m x
1.08 – 1.90m

Please note

Kitchen layouts are indicative only, please refer to your Sales Executive.