



CGI shows Plot 10

MARSHALL 3 FH

This elegant home enjoys a spacious feel with 3 good sized bedrooms, one of which is en-suite. Two sets of French doors lead to the garden from both the living and dining area.

GROUND FLOOR

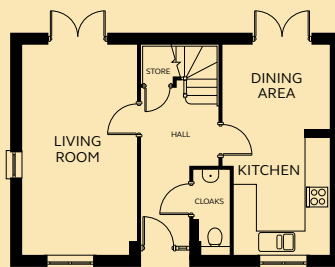
Kitchen/Dining	2.49 – 2.77m x 3.14 – 5.48m
Living Room	3.00m x 5.48m
Cloakroom	0.95m x 2.18m

FIRST FLOOR

Bedroom 1	2.07 – 3.39m x 2.94 – 3.45m (inc wardrobe space)
En-suite	1.40m x 1.93m
Bedroom 2	3.08 – 4.58m x 2.02 – 2.94m
Bedroom 3	2.82m x 2.44m
Bathroom	2.07m x 1.93m

NB. Plot 16 floor layouts and room dimensions differ from the above, please refer to your Sales Executive.

GROUND FLOOR



FIRST FLOOR

