



CGI shows Plots 52 & 53

WEBB

3

The 3 bedroom Webb enjoys a particularly impressive master bedroom with en-suite and built-in wardrobe. Open plan living on the ground floor adds to the airy feel.

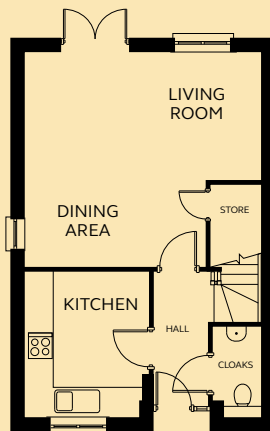
GROUND FLOOR

| | |
|---------------|--------------------------------|
| Kitchen | 2.72m x 3.13m |
| Living/Dining | 3.93 – 5.14m x 2.75 – 4.68m |
| Cloakroom | 1.03m x 1.92m |

FIRST FLOOR

| | |
|-----------|--|
| Bedroom 1 | 3.08m x 3.20 – 4.92m (inc wardrobe space) |
| En-suite | 1.83m x 1.63m |
| Bedroom 2 | 3.08m x 2.94m |
| Bedroom 3 | 1.96m x 2.81m |
| Bathroom | 1.96m x 1.90m |

GROUND FLOOR



FIRST FLOOR

