

Applegate Park  
Kingsbridge

CHILLINGTON  
E 3



CGI shows plot 62

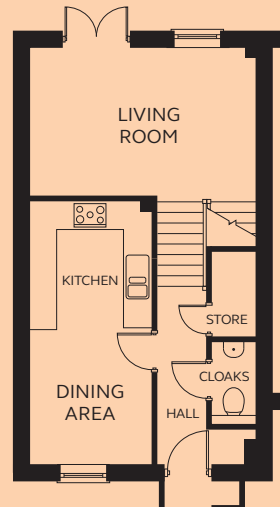


## CHILLINGTON 3 FH

A split-level three bedroom home, with full-length windows to the front aspect bringing in plenty of light. To the ground floor is an open plan kitchen and dining area, and the separate living room has French doors opening onto the garden. The first floor has a family bathroom and three bedrooms, including a spacious master bedroom with fitted wardrobe and en-suite.

### GROUND FLOOR

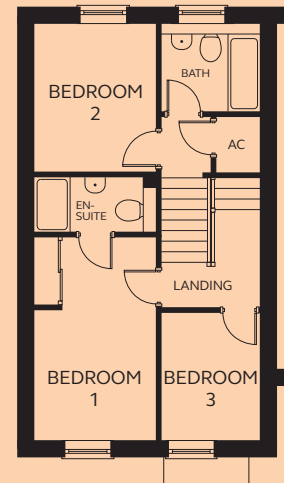
|                |               |
|----------------|---------------|
| Kitchen/Dining | 2.60m x 5.73m |
| Living Room    | 4.92m x 3.19m |
| Cloakroom      | 0.94m x 1.81m |



GROUND FLOOR

### FIRST FLOOR

|           |                                       |
|-----------|---------------------------------------|
| Bedroom 1 | 2.66m x 4.44m<br>(inc wardrobe space) |
| En-suite  | 2.67m x 1.20m                         |
| Bedroom 2 | 2.66m x 3.22m                         |
| Bedroom 3 | 2.16m x 2.80m                         |
| Bathroom  | 2.16m x 1.92m                         |



FIRST FLOOR