

# Applegate Park

Kingsbridge

DARTINGTON  
E 3



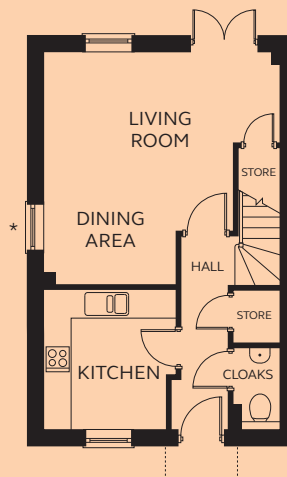


## DARTINGTON 3 FH

This three bedroom home boasts a large open plan living room and dining area, with French doors leading to the garden. A family bathroom and three good-sized bedrooms make up the first floor, the master bedroom complete with en-suite and fitted wardrobe.

### GROUND FLOOR

Living/Dining	2.68 – 5.14m x 1.70 – 4.97m
Kitchen	2.65 – 2.91m x 3.05m
Cloakroom	0.85 – 1.03m x 1.80m

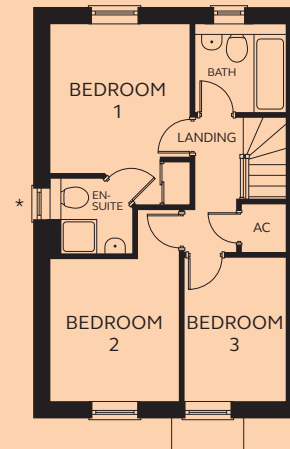


GROUND FLOOR

### FIRST FLOOR

Bedroom 1	3.05m x 3.25 – 3.93m (inc wardrobe space)
En-suite	1.69m x 1.80m
Bedroom 2	2.80m x 3.05 – 4.15m
Bedroom 3	2.25m x 3.11m
Bathroom	2.00m x 1.92m

\* Window to selected plots.



FIRST FLOOR