

Applegate Park
Kingsbridge

MALBOROUGH
4



CGI shows plot 28



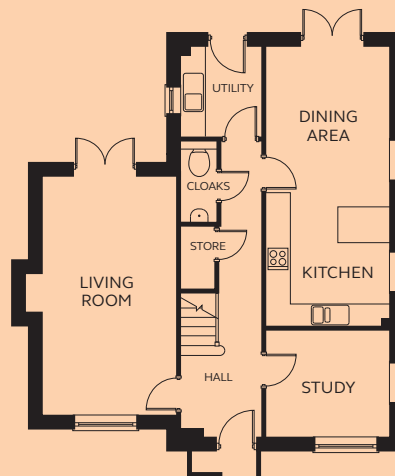
SINCE 1992

MALBOROUGH 4 FH

An impressive four bedroom home, with large windows. Both the living room and the open plan kitchen and dining area have French doors that open out into the rear garden. The ground floor additionally has a study and useful utility room. Four generous sized bedrooms and a family bathroom comprise the first floor, with the master bedroom benefitting from a fitted wardrobe and en-suite.

GROUND FLOOR

Kitchen/Dining	3.09m x 7.04m
Living Room	3.33m x 6.04m
Study	3.09m x 2.67m
Utility	2.00m x 2.28m
Cloakroom	0.90m x 2.02m

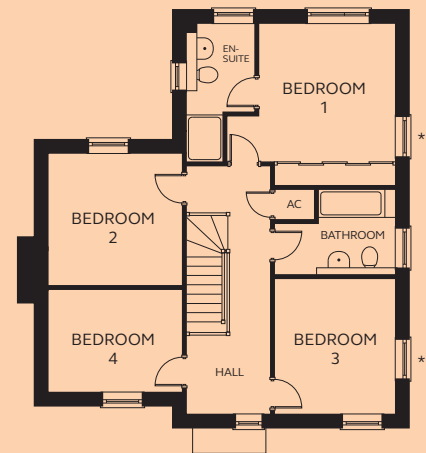


GROUND FLOOR

FIRST FLOOR

Bedroom 1	3.45 – 4.26m x 3.51m (exc wardrobe space)
En-suite	0.92 – 1.71m x 2.25 – 3.52m
Bedroom 2	3.33m x 3.36m
Bedroom 3	3.06m x 3.41m
Bedroom 4	3.33m x 2.59m
Bathroom	3.06m x 1.31 – 2.16m

* Window to Plot 7 only.



FIRST FLOOR

Devonshire Homes endeavours to provide accurate and reliable sales details in order to provide purchasers with a valid representation of the finished houses. However, during the process of construction, alterations may become necessary and various changes and improvements can occur. Dimensions should be used as a guide only and should not be used to order carpets or furniture and customers should satisfy themselves of the actual dimensions of the property they are purchasing. Elevations, materials, style and position of windows and porches can all differ in the same house type from plot to plot. Purchasers should ensure that they are aware of the detail and finish provided in a specific plot before committing to a purchase.