

Applegate Park
Kingsbridge

THURLESTONE
4





THURLESTONE

4 FH

This spacious four bedroom home offers accommodation across three floors. Entering on the ground floor with integral garage, there is a bedroom, shower room and separate study. To the lower ground floor is an open plan kitchen, living and dining space, opening onto the garden via French and folding doors. A family bathroom and three further bedrooms to the first floor, including master with en-suite and fitted wardrobe.

LOWER GROUND FLOOR

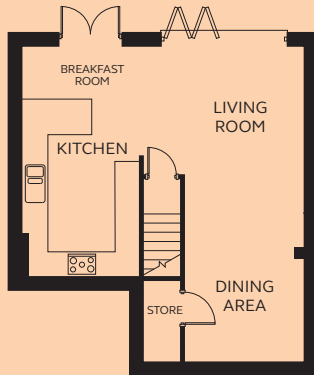
Kitchen/Breakfast	2.77 – 2.88m x 5.81m
Living/Dining	3.10 – 4.01m x 7.95m

GROUND FLOOR

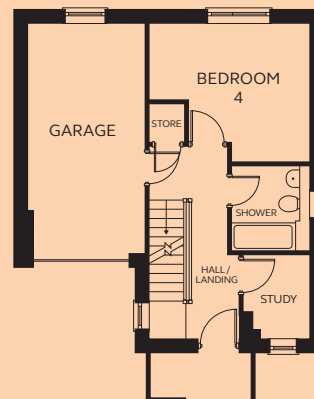
Garage	2.72 – 2.83m x 5.81m
Bedroom 4	1.94 – 4.01m x 1.94 – 3.51m
Study	1.22 – 1.69m x 1.45 – 2.10m
Shower	1.94m x 2.15m

FIRST FLOOR

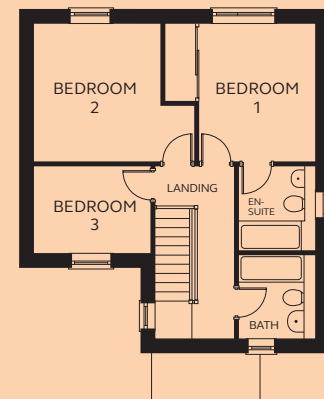
Bedroom 1	2.95m x 3.51m (exc wardrobe space)
En-suite	1.94m x 2.15m
Bedroom 2	3.16 – 4.01m x 1.42 – 3.51m
Bedroom 3	2.93m x 2.21m
Bathroom	1.94m x 2.10m



LOWER GROUND FLOOR



GROUND FLOOR



FIRST FLOOR

Devonshire Homes endeavours to provide accurate and reliable sales details in order to provide purchasers with a valid representation of the finished houses. However, during the process of construction, alterations may become necessary and various changes and improvements can occur. Dimensions should be used as a guide only and should not be used to order carpets or furniture and customers should satisfy themselves of the actual dimensions of the property they are purchasing. Elevations, materials, style and position of windows and porches can all differ in the same house type from plot to plot. Purchasers should ensure that they are aware of the detail and finish provided in a specific plot before committing to a purchase.