

Applegate Park

Kingsbridge

WEMBURY
E 3





WEMBURY

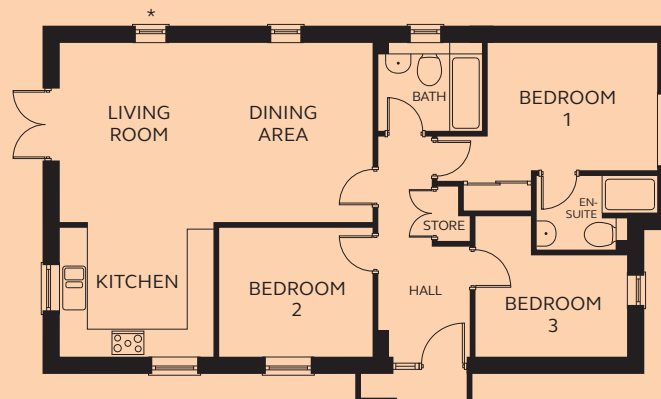
3 FH

A stylish three bedroom bungalow, with considered glazing and high ceilings ensuring a bright and airy home. The large open plan kitchen, living and dining area has French doors leading to the rear garden. A family bathroom and three bedrooms complete the accommodation, with the master bedroom benefitting from a large window and complete with fitted wardrobe and en-suite.

GROUND FLOOR

Kitchen/Living/Dining	3.34 – 6.75m x 3.86 – 6.82m
Bedroom 1	3.73 – 4.80m x 3.01m (exc wardrobe space)
En-suite	1.97 – 2.64m x 0.75 – 1.59m
Bedroom 2	3.32m x 2.77m
Bedroom 3	3.30m x 2.22 – 3.05m
Bathroom	2.25m x 1.92m

* Window to Plot 1 only.



GROUND FLOOR