

Chilla Junction
Halwill Junction

SILVERTON
5





SILVERTON 5 FH

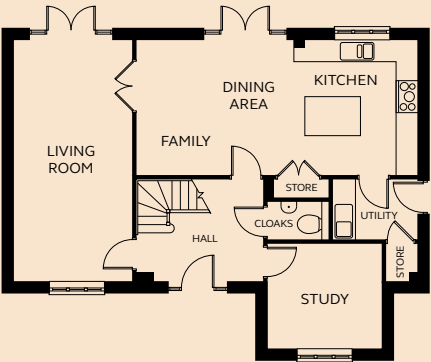
An impressive five bedroom house with an open plan kitchen and dining area that leads to the garden via French doors. The separate living room also opens onto the garden, and the addition of a study and a utility room make this a well-functioning home. To the first floor is the family bathroom and five bedrooms, two with en-suite shower room and fitted wardrobe.

GROUND FLOOR

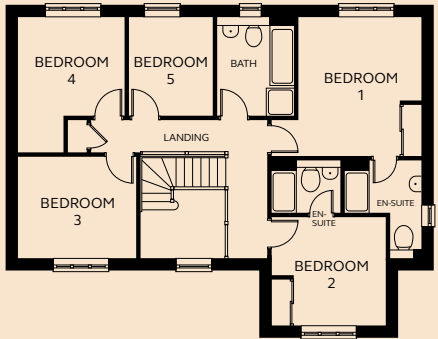
Living Room	3.33m x 6.83m
Kitchen/Dining/Family	7.97m x 3.80m
Study	3.23m x 2.98m
Utility	2.40m x 1.72m
Cloakroom	1.75m x 1.10m

FIRST FLOOR

Bedroom 1	3.50m x 3.94m
En-suite 1	2.18m x 2.77m
Bedroom 2	3.23m x 3.09m
En-suite 2	1.98m x 1.50m
Bedroom 3	3.39m x 2.89m
Bedroom 4	3.04m x 3.85m
Bedroom 5	2.40m x 2.81m
Bathroom	2.20m x 2.81m



GROUND FLOOR



FIRST FLOOR

Floorplan shown is handed.
Kitchen layout is indicative only.

Please refer to Sales Executive
for plot-specific details.