

Chilla Junction
Halwill Junction

TORRIDGE
4



Chilla Junction

Halwill Junction



SINCE 1992

DEVONSHIRE HOMES

TORRIDGE

4 FH

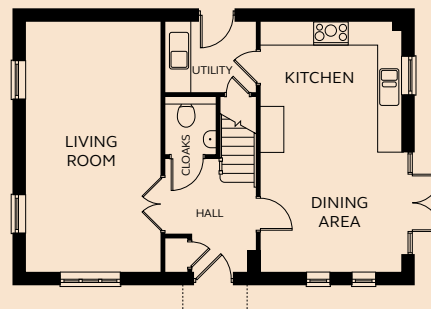
A well-designed four bedroom house with French doors opening onto the garden from the open plan kitchen and dining room. The separate living room has plenty of glazing to give a light and spacious feel. Four bedrooms and a family bathroom are to the first floor, with the master bedroom benefiting from an en-suite shower room and fitted wardrobe.

GROUND FLOOR

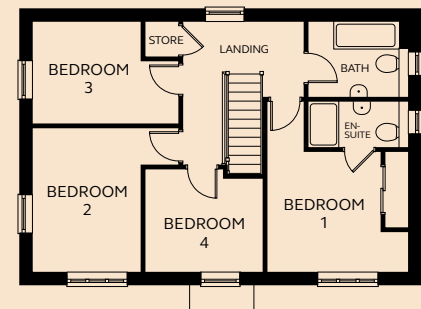
Kitchen	3.64m x 3.16m
Dining Area	3.64m x 3.10m
Living Room	3.48m x 6.49m
Utility	2.34m x 1.84m
Cloakroom	1.33m x 1.53m

FIRST FLOOR

Bedroom 1	3.13m x 3.67m
En-suite	2.60m x 1.22m
Bedroom 2	2.82m x 3.75m
Bedroom 3	2.85 – 3.80m x 1.65 – 2.65m
Bedroom 4	3.06m x 2.68m
Bathroom	2.38m x 1.96m



GROUND FLOOR



FIRST FLOOR

Floorplan shown is handed.
Kitchen layout is indicative only.

Please refer to Sales Executive for plot-specific details.

Devonshire Homes endeavours to provide accurate and reliable sales details in order to provide purchasers with a valid representation of the finished houses. However, during the process of construction, alterations may become necessary and various changes and improvements can occur. Dimensions should be used as a guide only and should not be used to order carpets or furniture and customers should satisfy themselves of the actual dimensions of the property they are purchasing. Elevations, materials, style and position of windows and porches can all differ in the same house type from plot to plot. Purchasers should ensure that they are aware of the detail and finish provided in a specific plot before committing to a purchase.

chillajunction@
devonshirehomes.co.uk