

Dancing Green

Wincanton

CLEVEDON

4



CGI shows plot 22



CLEVEDON

4 FH

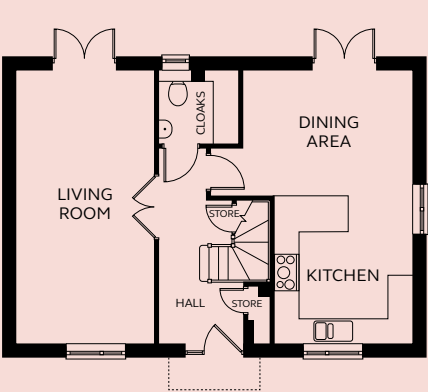
A three bedroom house with large open plan kitchen and dining area that leads to the rear garden via French doors. The separate living room additionally opens onto the garden. Upstairs are the family bathroom and four bedrooms, master bedroom with en-suite shower room.

GROUND FLOOR

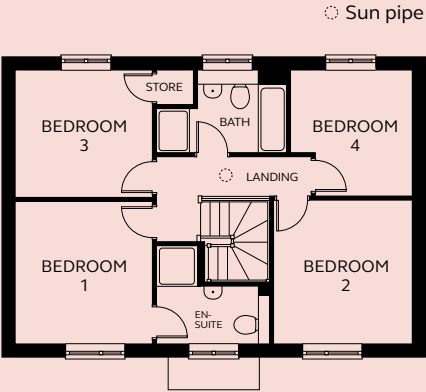
Living Room	3.38m x 6.72m
Kitchen	3.38m x 3.65m
Dining Area	4.15m x 3.06m
Cloakroom	1.93m x 1.81m

FIRST FLOOR

Bedroom 1	3.35m x 3.50m
En-suite	2.75m x 2.41m
Bedroom 2	3.40m x 3.52m
Bedroom 3	3.35m x 3.13m
Bedroom 4	2.99m x 3.11m
Bathroom	3.20m x 2.03m



GROUND FLOOR



FIRST FLOOR

Devonshire Homes endeavours to provide accurate and reliable sales details in order to provide purchasers with a valid representation of the finished houses. However, during the process of construction, alterations may become necessary and various changes and improvements can occur. Dimensions should be used as a guide only and should not be used to order carpets or furniture and customers should satisfy themselves of the actual dimensions of the property they are purchasing. Elevations, materials, style and position of windows and porches can all differ in the same house type from plot to plot. Purchasers should ensure that they are aware of the detail and finish provided in a specific plot before committing to a purchase.