

Dancing Green

Wincanton

SOMERTON
F4 4



Dancing Green

Wincanton



SINCE 1992

DEVONSHIRE HOMES

SOMERTON

4 FH

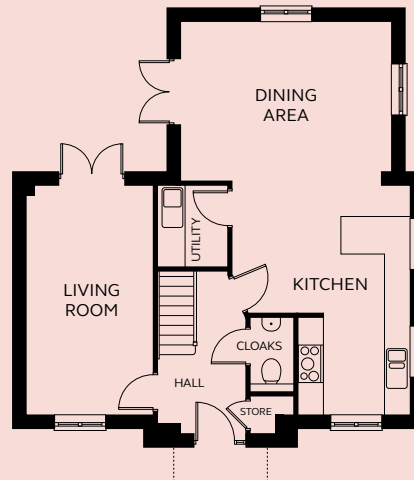
This four bedroom house has a generous open plan kitchen and dining area for entertaining, plus a utility room and separate living room. Both the master and second bedroom have en-suite shower rooms. Two further bedrooms and the family bathroom complete the first floor.

GROUND FLOOR

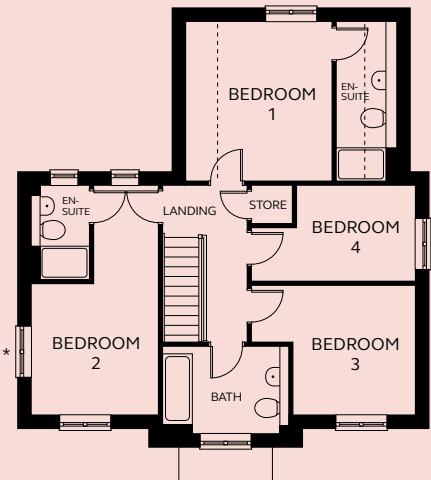
Living Room	3.00m x 5.48m
Kitchen	2.65 – 4.24m x 5.48m
Dining Area	5.03m x 3.79m
Utility	1.65m x 1.95m
Cloakroom	1.05m x 1.78m

FIRST FLOOR

Bedroom 1	3.50m x 3.82m
En-suite 1	1.44m x 3.82m
Bedroom 2	1.57 – 3.06m x 3.14 – 5.48m
En-suite 2	1.40m x 2.25m
Bedroom 3	2.95 – 3.93m x 3.10m
Bedroom 4	2.84 – 3.93m x 2.29m
Bathroom	3.00m x 2.09m



GROUND FLOOR



FIRST FLOOR

----- Sloped ceiling in roof space.

* No window to plot 20.
Please refer to Sales Executive for plot-specific details.

Floorplan shown is handed.

Devonshire Homes endeavours to provide accurate and reliable sales details in order to provide purchasers with a valid representation of the finished houses. However, during the process of construction, alterations may become necessary and various changes and improvements can occur. Dimensions should be used as a guide only and should not be used to order carpets or furniture and customers should satisfy themselves of the actual dimensions of the property they are purchasing. Elevations, materials, style and position of windows and porches can all differ in the same house type from plot to plot. Purchasers should ensure that they are aware of the detail and finish provided in a specific plot before committing to a purchase.

dancinggreen@
devonshirehomes.co.uk