

# Dancing Green

Wincanton

WINCANTON

4



# Dancing Green

Wincanton



SINCE 1992

DEVON  
SHIRE  
HOMES

## WINCANTON

4 FH

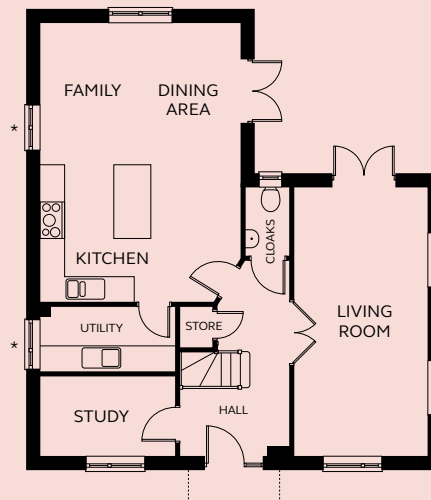
A light and spacious four bedroom house. The triple aspect living room has French doors opening onto the rear garden, which can also be accessed from the open plan kitchen and dining room. This home also features a separate utility room and study. Upstairs, the master bedroom enjoys a Juliet balcony, fitted wardrobe and en-suite shower room. Three further bedrooms and a family bathroom.

### GROUND FLOOR

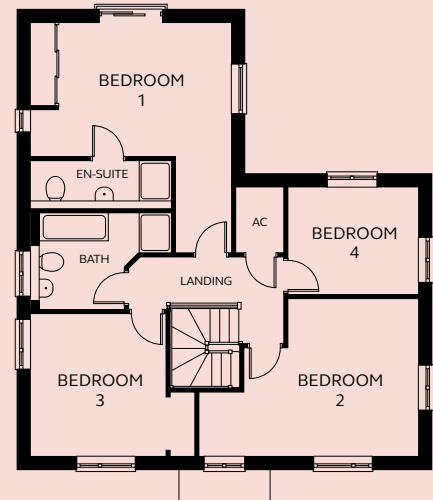
Living Room	3.26m x 6.60m
Kitchen/Dining/Family	4.92m x 6.85m
Study	3.29m x 1.96m
Utility	3.29m x 1.60m
Cloakroom	1.05m x 1.70m

### FIRST FLOOR

Bedroom 1	4.92m x 3.29 – 5.67m
En-suite	3.46m x 1.20m
Bedroom 2	3.21 – 5.40m x 1.57 – 3.88m
Bedroom 3	4.04m x 3.48m
Bedroom 4	3.21m x 2.64m
Bathroom	3.46m x 2.38m



GROUND FLOOR



FIRST FLOOR

\* Windows to plot 1 only.  
Please refer to Sales Executive  
for plot-specific details.

Devonshire Homes endeavours to provide accurate and reliable sales details in order to provide purchasers with a valid representation of the finished houses. However, during the process of construction, alterations may become necessary and various changes and improvements can occur. Dimensions should be used as a guide only and should not be used to order carpets or furniture and customers should satisfy themselves of the actual dimensions of the property they are purchasing. Elevations, materials, style and position of windows and porches can all differ in the same house type from plot to plot. Purchasers should ensure that they are aware of the detail and finish provided in a specific plot before committing to a purchase.

dancinggreen@  
devonshirehomes.co.uk