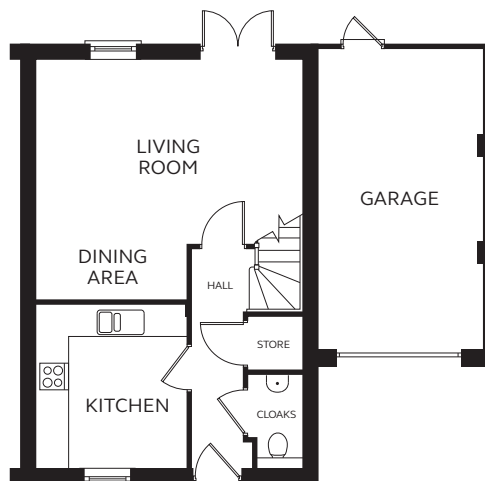


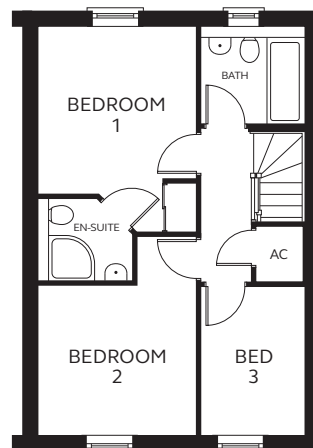


CGI shows plots 63 & 64

### GROUND FLOOR



### FIRST FLOOR



This 3 bedroom home benefits from an open plan living room and dining area on the ground floor, while upstairs the master bedroom includes an en-suite shower room and fitted wardrobe.

The rear garden is accessed via double doors in the living room.

### GROUND FLOOR

**Kitchen**  
2.93m x 3.15m

**Living/Dining**  
2.93 – 5.15m x  
3.59 – 4.65m  
(inc stairs bulkhead)

**Cloakroom**  
0.86 – 1.03m x  
1.21 – 1.63m

**Store**  
1.03m x 1.02m

### FIRST FLOOR

**Bedroom 1**  
3.06m x 3.26 – 4.00m  
(inc wardrobe space)

**En-suite**  
1.12 – 1.65m x  
0.92 – 1.62m

**Bedroom 2**  
1.90 – 3.06m x  
2.90 – 3.86m

**Bedroom 3**  
2.00m x 2.89m

**Bathroom**  
2.00m x 1.70 – 1.94m

### Please note

Garages to selected plots only.

Positioning and width of some windows will vary between plots.

Kitchen layouts are indicative only, please refer to your Sales Executive.