

Longston Cross

Bovey Tracey

ARLINGTON V3

5



Longston Cross

Bovey Tracey



SINCE 1992

DEVONSHIRE HOMES

ARLINGTON V3 5 FH

This impressive five bedroom house provides ample accommodation, including a separate living room with large bay window, plus a useful study. The open plan kitchen and dining area has folding doors that open onto the garden. Bedrooms are across two floors, three with en-suite shower room and master also benefiting from a dressing room.

GROUND FLOOR

Kitchen	4.15m x 2.89m
Dining/Family	3.55m x 4.69m
Living Room	3.20m x 4.66m
Study	2.77m x 2.29m
Utility	1.63m x 1.25m
Cloakroom	1.50m x 1.25m

FIRST FLOOR

Bedroom 1	3.16m x 3.53m
En-suite 1	2.00m x 2.29m
Dressing	2.36m x 2.29m

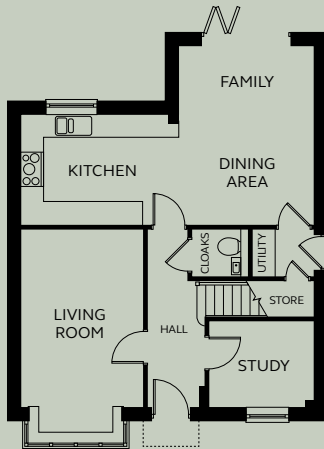
Bedroom 4	2.66m x 4.09m
Bedroom 5	2.86m x 3.00m
Bathroom	2.00m x 3.00m

SECOND FLOOR

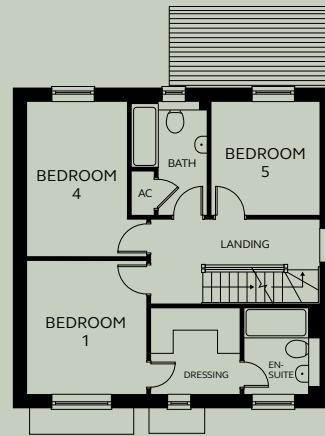
Bedroom 2	3.49 – 4.64m x 2.78m
En-suite 2	1.98m x 2.02m
Bedroom 3	3.49 – 4.64m x 2.51m
En-suite 3	2.97m x 1.12m

----- Sloped ceiling in roof space.

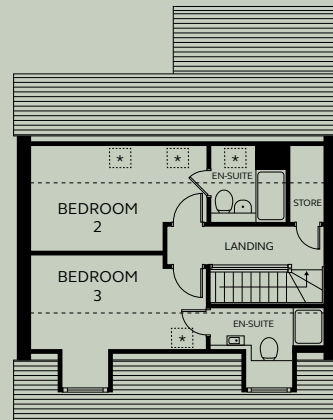
Kitchen layout is indicative only, please refer to Sales Executive for plot-specific details.



GROUND FLOOR



FIRST FLOOR



SECOND FLOOR

* Roof light

Devonshire Homes endeavours to provide accurate and reliable sales details in order to provide purchasers with a valid representation of the finished houses. However, during the process of construction, alterations may become necessary and various changes and improvements can occur. Dimensions should be used as a guide only and should not be used to order carpets or furniture and customers should satisfy themselves of the actual dimensions of the property they are purchasing. Elevations, materials, style and position of windows and porches can all differ in the same house type from plot to plot. Purchasers should ensure that they are aware of the detail and finish provided in a specific plot before committing to a purchase.

longstoncross@
devonshirehomes.co.uk