

# Longston Cross

Bovey Tracey

# ARLINGTON VARIANT

5





## ARLINGTON VARIANT

### 5 FH

With accommodation across three levels, this five bedroom house has a separate study and an additional first floor living room. The open plan kitchen, living and dining area to the ground floor has folding doors that open onto the garden. The master bedroom with dressing room and en-suite, a family bathroom and further bedroom make up the first floor. The second floor comprises three bedrooms and a bathroom.

#### GROUND FLOOR

Kitchen/Living/Dining	3.26 – 6.36m x 3.59 – 7.70m
Study	2.20m x 2.82m
Utility	1.74m x 2.10m
Cloakroom	2.07m x 1.05m

#### FIRST FLOOR

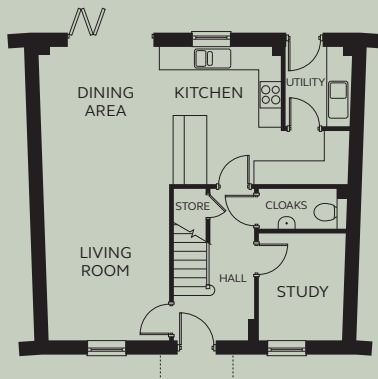
Living Room	3.15m x 3.25 – 3.95m
Bedroom 1	3.51 – 4.40m x 3.68m
Dressing	2.41m x 1.75m

En-suite	2.61m x 2.10m
Bedroom 5	3.45m x 2.10m
Bathroom	1.94m x 2.18m

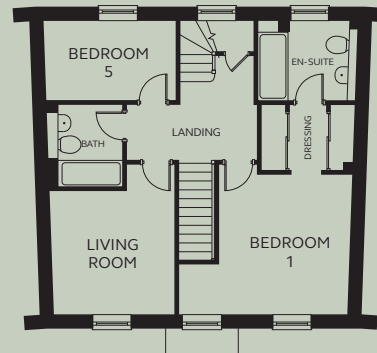
#### SECOND FLOOR

Bedroom 2	4.40m x 2.94 – 3.97m (inc wardrobe space)
En-suite 2	2.46m x 1.70m
Bedroom 3	3.21m x 3.97m
Bedroom 4	3.40m x 2.50m
Bathroom	2.52m x 2.89m

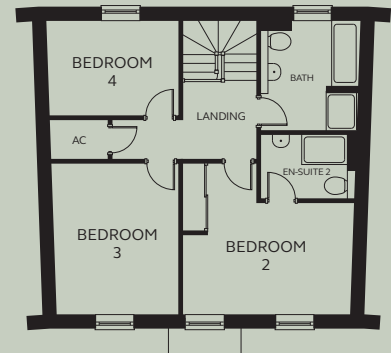
Rooms are splayed.



GROUND FLOOR



FIRST FLOOR



SECOND FLOOR

Devonshire Homes endeavours to provide accurate and reliable sales details in order to provide purchasers with a valid representation of the finished houses. However, during the process of construction, alterations may become necessary and various changes and improvements can occur. Dimensions should be used as a guide only and should not be used to order carpets or furniture and customers should satisfy themselves of the actual dimensions of the property they are purchasing. Elevations, materials, style and position of windows and porches can all differ in the same house type from plot to plot. Purchasers should ensure that they are aware of the detail and finish provided in a specific plot before committing to a purchase.