

# Longston Cross

Bovey Tracey

BICKLEIGH

3



# Longston Cross

Bovey Tracey



SINCE 1992

# DEVONSHIRE HOMES

## BICKLEIGH

### 3 FH

This popular well-designed three bedroom house benefits from two sets of French doors each leading onto the rear garden, one set from the full length living room and one from the open plan kitchen/dining area. To the first floor the master bedroom has fitted wardrobes and a shower room en-suite.

#### GROUND FLOOR

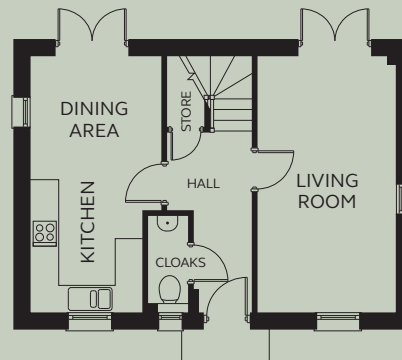
|                |                      |
|----------------|----------------------|
| Kitchen/Dining | 2.43 – 2.86m x 5.59m |
| Living Room    | 3.00m x 5.59m        |
| Cloakroom      | 0.91m x 2.13m        |

#### FIRST FLOOR

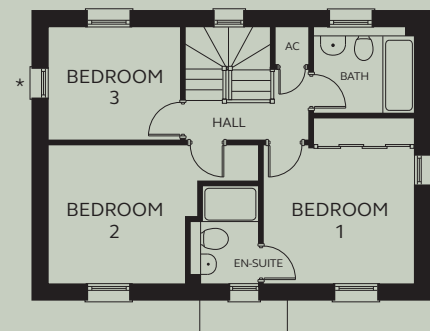
|           |  |
|-----------|--|
| Bedroom 1 | 3.31m x 3.06 – 3.63m<br>(inc wardrobe space) |
| En-suite  | 1.49m x 2.11m                                |
| Bedroom 2 | 2.98 – 4.55m x 3.04m                         |
| Bedroom 3 | 2.86m x 2.47m                                |
| Bathroom  | 2.21m x 1.90m                                |

Room dimensions differ for Plot 10

\* Positioning of window varies between plots, please refer to your Sales Executive.



GROUND FLOOR



FIRST FLOOR

Devonshire Homes endeavours to provide accurate and reliable sales details in order to provide purchasers with a valid representation of the finished houses. However, during the process of construction, alterations may become necessary and various changes and improvements can occur. Dimensions should be used as a guide only and should not be used to order carpets or furniture and customers should satisfy themselves of the actual dimensions of the property they are purchasing. Elevations, materials, style and position of windows and porches can all differ in the same house type from plot to plot. Purchasers should ensure that they are aware of the detail and finish provided in a specific plot before committing to a purchase.

[longstoncross@devonshirehomes.co.uk](mailto:longstoncross@devonshirehomes.co.uk)