

Longston Cross

Bovey Tracey

BICTON

2



Longston Cross

Bovey Tracey



SINCE 1992

DEVON
SHIRE
HOMES

BICTON 2 FH

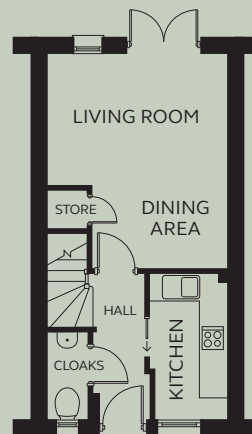
A well designed stylish two bedroom house with useful storage. To the ground floor French doors open onto the rear garden from the living room. Two double bedrooms and a family bathroom are on the first floor.

GROUND FLOOR

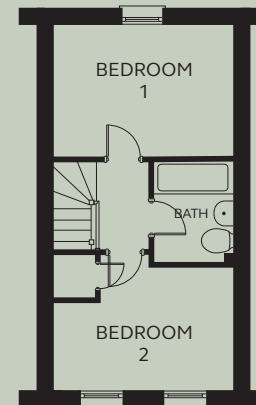
Living/Dining	2.94 – 3.90m x 2.90 – 4.71m
Kitchen	1.67m x 3.16m
Cloakroom	0.90m x 1.90m

FIRST FLOOR

Bedroom 1	3.90m x 2.90m
Bedroom 2	3.90m x 1.90 – 2.65m
Bathroom	1.71m x 2.24m



GROUND FLOOR



FIRST FLOOR

Devonshire Homes endeavours to provide accurate and reliable sales details in order to provide purchasers with a valid representation of the finished houses. However, during the process of construction, alterations may become necessary and various changes and improvements can occur. Dimensions should be used as a guide only and should not be used to order carpets or furniture and customers should satisfy themselves of the actual dimensions of the property they are purchasing. Elevations, materials, style and position of windows and porches can all differ in the same house type from plot to plot. Purchasers should ensure that they are aware of the detail and finish provided in a specific plot before committing to a purchase.

longstoncross@
devonshirehomes.co.uk