

Longston Cross

Bovey Tracey

DARTMOUTH

3



Longston Cross

Bovey Tracey



SINCE 1992

DEVON
SHIRE
HOMES

DARTMOUTH 3 FH

Creative use of space and glazing combine to create a light and airy feel. The ground floor benefits from an open plan kitchen/dining area with French doors leading onto the rear garden. There is a separate living room and large cloakroom to the ground floor. On the first floor the master bedroom has fitted wardrobes and en-suite shower room.

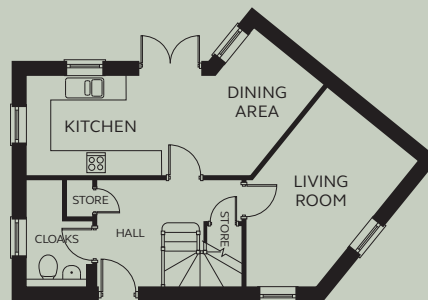
GROUND FLOOR

Kitchen/Dining	7.39m x 2.22 – 2.47m *
Living Room	4.25m x 2.64 – 2.89m *
Cloakroom	1.65m x 2.64m

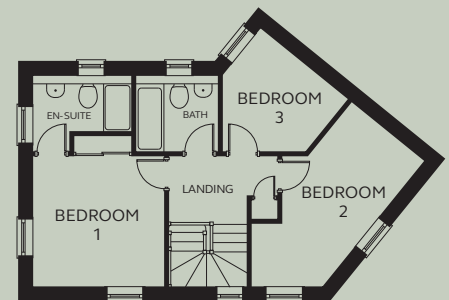
FIRST FLOOR

Bedroom 1	3.30m x 3.26m (exc wardrobe space)
En-suite	2.41m x 1.40 – 2.04m
Bedroom 2	5.14m x 1.58 – 2.34m *
Bedroom 3	2.99m x 2.82m *
Bathroom	2.13m x 1.91m

* Splayed room



GROUND FLOOR



FIRST FLOOR

Devonshire Homes endeavours to provide accurate and reliable sales details in order to provide purchasers with a valid representation of the finished houses. However, during the process of construction, alterations may become necessary and various changes and improvements can occur. Dimensions should be used as a guide only and should not be used to order carpets or furniture and customers should satisfy themselves of the actual dimensions of the property they are purchasing. Elevations, materials, style and position of windows and porches can all differ in the same house type from plot to plot. Purchasers should ensure that they are aware of the detail and finish provided in a specific plot before committing to a purchase.

longstoncross@
devonshirehomes.co.uk