

Longston Cross

Bovey Tracey

KILLERTON

5



Longston Cross

Bovey Tracey



SINCE 1992

DEVONSHIRE HOMES

KILLERTON

5 FH

This large five bedroom house has accommodation across three levels. Folding doors open onto the garden from the open plan kitchen, living and dining area. A separate study and a utility/cloakroom complete the ground floor. To the first floor are a family bathroom and three bedrooms, including master with dressing room and en-suite. Two further bedrooms and a shower room make up the second floor.

GROUND FLOOR

Kitchen/Living/Dining	3.25 – 7.70m x 5.21 – 7.70m
Study	2.18m x 2.36m
Utility/Cloakroom	2.18m x 1.69m

FIRST FLOOR

Bedroom 1	3.34 – 4.30m x 3.68m
Dressing	2.23m x 1.75m
En-suite	2.78m x 2.10m
Bedroom 2	3.31m x 3.25 – 3.68m (inc wardrobe space)

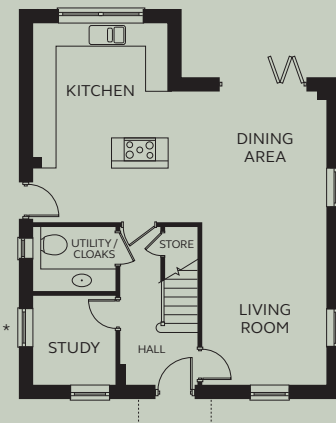
Bedroom 3	2.78m x 2.10m
Bathroom	1.75m x 2.18m

SECOND FLOOR

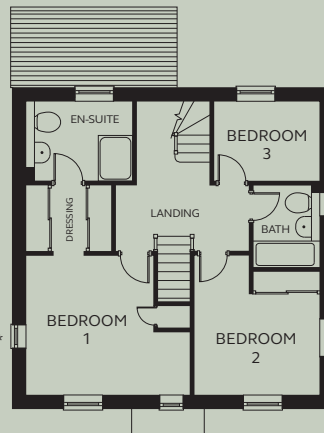
Bedroom 4	2.61m x 3.40m (exc dormer)
Bedroom 5	2.61m x 2.61 – 3.40m (exc dormer)
Shower	1.59m x 2.60m

Floorplan shown is handed. Velux roof light to Shower. * Window to Plot 75 only.

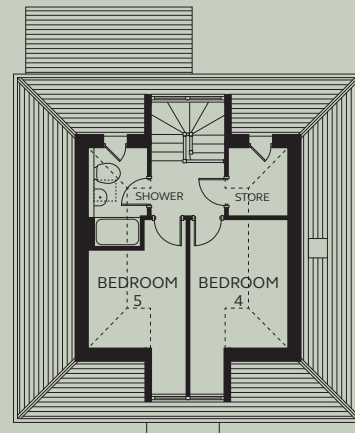
----- Approximate location of flat ceiling meeting sloping ceiling in roof space.



GROUND FLOOR



FIRST FLOOR



SECOND FLOOR

Devonshire Homes endeavours to provide accurate and reliable sales details in order to provide purchasers with a valid representation of the finished houses. However, during the process of construction, alterations may become necessary and various changes and improvements can occur. Dimensions should be used as a guide only and should not be used to order carpets or furniture and customers should satisfy themselves of the actual dimensions of the property they are purchasing. Elevations, materials, style and position of windows and porches can all differ in the same house type from plot to plot. Purchasers should ensure that they are aware of the detail and finish provided in a specific plot before committing to a purchase.

longstoncross@
devonshirehomes.co.uk