

# Longston Cross

Bovey Tracey

SAUNTON

4



# Longston Cross

Bovey Tracey



SINCE 1992

# DEVONSHIRE HOMES

## SAUNTON

### 4 BH

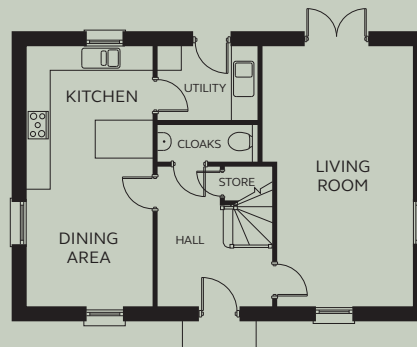
A well-proportioned four bedroom house with a well-designed open plan kitchen/dining area and separate utility. The living room has French doors opening onto the garden. To the first floor the master bedroom has built in wardrobes and en-suite shower room. There are three further bedrooms and a family bathroom.

#### GROUND FLOOR

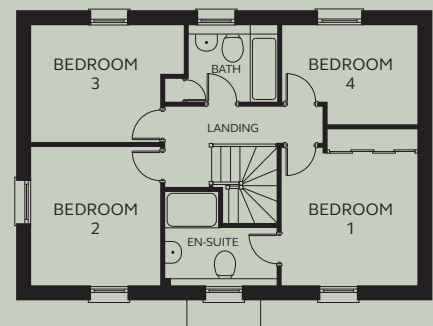
Kitchen/Dining	3.15m x 6.49m
Living Room	3.35 – 3.75m x 6.49m
Utility	2.44m x 1.83m
Cloakroom	2.40m x 0.95m

#### FIRST FLOOR

Bedroom 1	3.41m x 3.91m (inc wardrobe space)
En-suite	2.84m x 1.44m (exc shower space)
Bedroom 2	3.21m x 3.46m
Bedroom 3	3.21 – 3.81m x 2.94m
Bedroom 4	2.29 – 3.40m x 2.49m
Bathroom	2.25m x 1.92m (exc cupboard)



GROUND FLOOR



FIRST FLOOR

Devonshire Homes endeavours to provide accurate and reliable sales details in order to provide purchasers with a valid representation of the finished houses. However, during the process of construction, alterations may become necessary and various changes and improvements can occur. Dimensions should be used as a guide only and should not be used to order carpets or furniture and customers should satisfy themselves of the actual dimensions of the property they are purchasing. Elevations, materials, style and position of windows and porches can all differ in the same house type from plot to plot. Purchasers should ensure that they are aware of the detail and finish provided in a specific plot before committing to a purchase.

[longstoncross@devonshirehomes.co.uk](mailto:longstoncross@devonshirehomes.co.uk)