

# Longston Cross II

Bovey Tracey

PARRETT

3



# Longston Cross II

Bovey Tracey



DEVON  
SHIRE  
HOMES

## PARRETT 3 FH

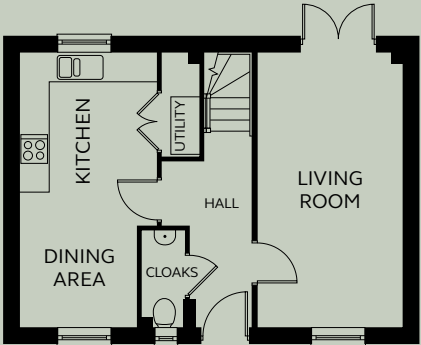
This three bedroom house has a dual aspect kitchen and dining space with utility. The separate living room has French doors opening onto the rear garden. Upstairs are the family bathroom and three bedrooms, with an en-suite shower room to the master bedroom.

### GROUND FLOOR

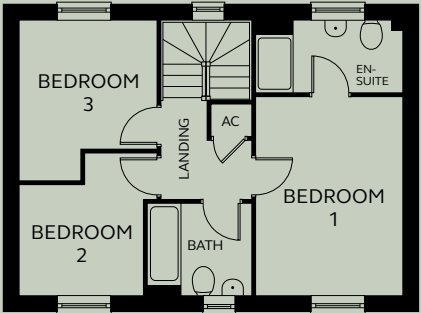
Kitchen/Dining	2.43 – 2.85m x 5.70m
Living Room	3.00m x 5.70m
Utility	0.80m x 2.16m
Cloakroom	0.91m x 2.01m

### FIRST FLOOR

Bedroom 1	3.06m x 4.13m
En-suite	3.06m x 1.49m
Bedroom 2	2.57m x 2.29 – 2.95m
Bedroom 3	2.86m x 2.66 – 3.33m
Bathroom	2.15m x 1.90m



GROUND FLOOR



FIRST FLOOR

Devonshire Homes endeavours to provide accurate and reliable sales details in order to provide purchasers with a valid representation of the finished houses. However, during the process of construction, alterations may become necessary and various changes and improvements can occur. Dimensions should be used as a guide only and should not be used to order carpets or furniture and customers should satisfy themselves of the actual dimensions of the property they are purchasing. Elevations, materials, style and position of windows and porches can all differ in the same house type from plot to plot. Purchasers should ensure that they are aware of the detail and finish provided in a specific plot before committing to a purchase.

[longstoncross@devonshirehomes.co.uk](mailto:longstoncross@devonshirehomes.co.uk)