

Mariner's Haven

Ilfracombe

AVON ARTS & CRAFTS
3



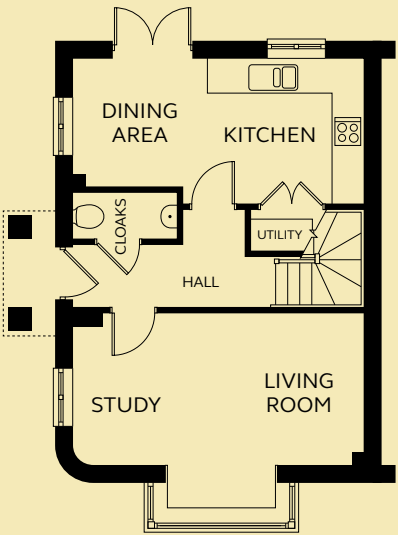


AVON
3

This three bedroom house features a curved carriage corner inspired by traditional architecture, and a box bay window to the spacious living room. From the open plan kitchen and dining area, French doors lead into the rear garden. Upstairs are the family bathroom and three bedrooms, with an en-suite shower room to the master bedroom.

GROUND FLOOR

Kitchen/Dining	5.65m x 2.80m
Living Room/Study (excluding bay window)	5.65m x 2.92m
Utility	1.47m x 0.82m
Cloakroom	2.00m x 0.90m

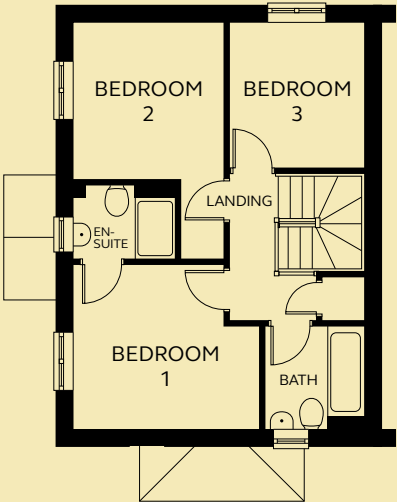


Floorplan shown is handed.

GROUND FLOOR

FIRST FLOOR

Bedroom 1	3.63m x 3.21m
En-suite	1.99m x 1.44m
Bedroom 2	2.93m x 3.04m
Bedroom 3	2.62m x 2.86m
Bathroom	1.93m x 2.01m



FIRST FLOOR

Devonshire Homes endeavours to provide accurate and reliable sales details in order to provide purchasers with a valid representation of the finished houses. However, during the process of construction, alterations may become necessary and various changes and improvements can occur. Dimensions should be used as a guide only and should not be used to order carpets or furniture and customers should satisfy themselves of the actual dimensions of the property they are purchasing. Elevations, materials, style and position of windows and porches can all differ in the same house type from plot to plot. Purchasers should ensure that they are aware of the detail and finish provided in a specific plot before committing to a purchase.