

Mariner's Haven

Ilfracombe

AVON
E 3



Mariner's Haven

Ilfracombe



SINCE 1992

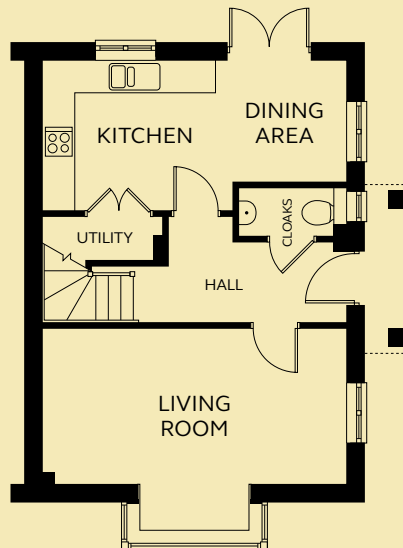
DEVON SHIRE HOMES

AVON 3 FH

This traditionally-inspired three bedroom house has a spacious living room with box bay window. From the open plan kitchen and dining area, French doors lead into the rear garden. Upstairs are the family bathroom and three bedrooms, master bedroom with an en-suite shower room and fitted wardrobe.

GROUND FLOOR

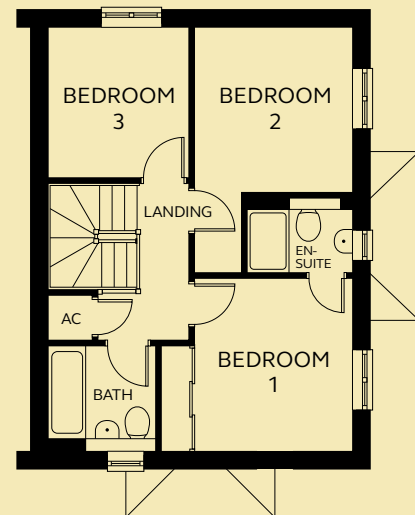
| | |
|----------------|---|
| Kitchen/Dining | 5.70m x 2.26 – 2.80m |
| Living Room | 5.70m x 2.90m (excluding bay window) |
| Utility | 1.45m x 0.82m |
| Cloakroom | 2.00m x 0.90m |



GROUND FLOOR

FIRST FLOOR

| | |
|-----------|---|
| Bedroom 1 | 2.97m x 3.25m (excluding wardrobe space) |
| En-suite | 1.98m x 1.20m |
| Bedroom 2 | 2.97m x 3.05 – 4.62m |
| Bedroom 3 | 2.64m x 2.86m |
| Bathroom | 2.02m x 1.76m |



FIRST FLOOR

Devonshire Homes endeavours to provide accurate and reliable sales details in order to provide purchasers with a valid representation of the finished houses. However, during the process of construction, alterations may become necessary and various changes and improvements can occur. Dimensions should be used as a guide only and should not be used to order carpets or furniture and customers should satisfy themselves of the actual dimensions of the property they are purchasing. Elevations, materials, style and position of windows and porches can all differ in the same house type from plot to plot. Purchasers should ensure that they are aware of the detail and finish provided in a specific plot before committing to a purchase.

marinershaven@
devonshirehomes.co.uk