

Mariner's Haven

Ilfracombe

CAMEL ARTS & CRAFTS



Mariner's Haven

Ilfracombe



SINCE 1992

DEVONSHIRE HOMES

CAMEL ARTS & CRAFTS

4 FH

This four bedroom home has a stunning living room with box bay window and a study space. The open plan kitchen and dining room has French doors leading to the garden. Family bathroom and two bedrooms to the first floor, with an en-suite shower room to the master. Two further bedrooms plus a shower room are on the second floor.

GROUND FLOOR

Kitchen/Dining	5.65m x 2.80m
Living Room / Study	5.65m x 2.92m (excluding bay window)
Cloakroom	2.00m x 0.90m

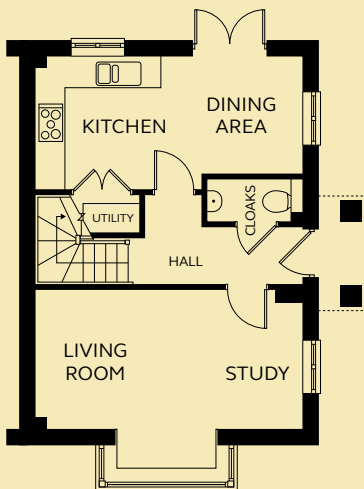
FIRST FLOOR

Bedroom 1	3.90m x 4.53m
En-suite	1.62m x 2.86m
Bedroom 2	3.57m x 3.25m
Bathroom	1.95m x 1.93m

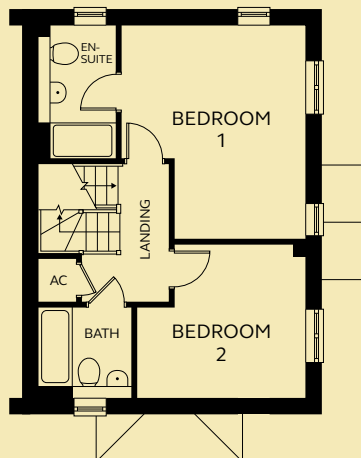
SECOND FLOOR

Bedroom 3	3.43m x 2.98m (excluding dormer space)
Bedroom 4	3.43m x 2.86m (excluding dormer space)
Shower Room	1.95m x 1.88m

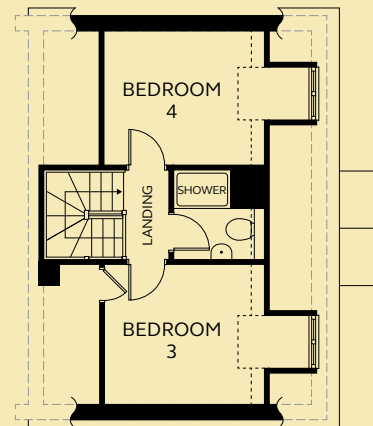
----- Sloped ceiling in roof space.



GROUND FLOOR



FIRST FLOOR



SECOND FLOOR

Devonshire Homes endeavours to provide accurate and reliable sales details in order to provide purchasers with a valid representation of the finished houses. However, during the process of construction, alterations may become necessary and various changes and improvements can occur. Dimensions should be used as a guide only and should not be used to order carpets or furniture and customers should satisfy themselves of the actual dimensions of the property they are purchasing. Elevations, materials, style and position of windows and porches can all differ in the same house type from plot to plot. Purchasers should ensure that they are aware of the detail and finish provided in a specific plot before committing to a purchase.

marinershaven@
devonshirehomes.co.uk