

Mariner's Haven

Ilfracombe



SINCE 1992

DEVON
SHIRE
HOMES

CAMEL FORMAL

4

This four bedroom home has a stunning living room with box bay window and a study space. The open plan kitchen and dining room has French doors leading to the garden. Family bathroom and two bedrooms to the first floor, with an en-suite shower room and dressing area to the master. Two further bedrooms plus a shower room are on the second floor.

GROUND FLOOR

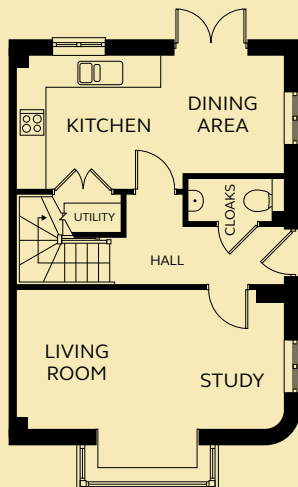
Kitchen/Dining	5.64m x 2.80m
Living Room / Study	5.64m x 2.92m
Cloakroom	2.00m x 0.90m

FIRST FLOOR

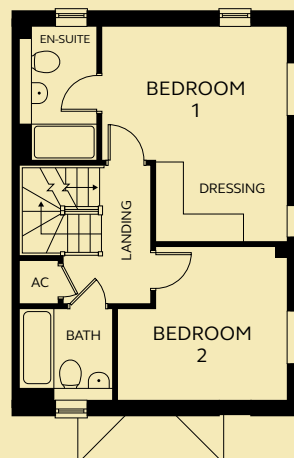
Bedroom 1 / Dressing	3.93m x 4.57m
En-suite	1.63m x 2.88m
Bedroom 2	3.60m x 3.25m
Bathroom	1.96m x 1.93m

SECOND FLOOR

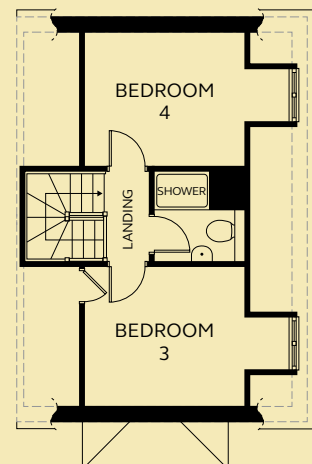
Bedroom 3	3.43m x 2.98m (excluding dormer space)
Bedroom 4	3.43m x 2.86m (excluding dormer space)
Shower Room	1.95m x 1.88m



GROUND FLOOR



FIRST FLOOR



SECOND FLOOR

Devonshire Homes endeavours to provide accurate and reliable sales details in order to provide purchasers with a valid representation of the finished houses. However, during the process of construction, alterations may become necessary and various changes and improvements can occur. Dimensions should be used as a guide only and should not be used to order carpets or furniture and customers should satisfy themselves of the actual dimensions of the property they are purchasing. Elevations, materials, style and position of windows and porches can all differ in the same house type from plot to plot. Purchasers should ensure that they are aware of the detail and finish provided in a specific plot before committing to a purchase.

marinershaven@
devonshirehomes.co.uk