

Mariner's Haven

Ilfracombe

CLYST ARTS & CRAFTS



Mariner's Haven

Ilfracombe



SINCE 1992

DEVONSHIRE HOMES

CLYST ARTS & CRAFTS

3 FH

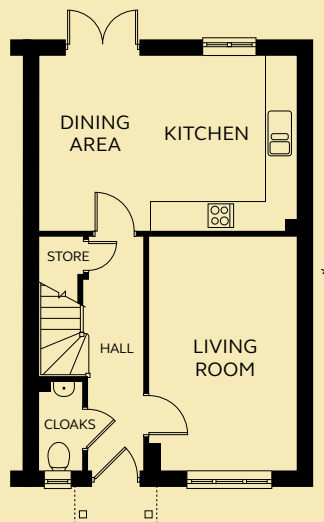
This well-designed three bedroom house has a spacious kitchen and dining room that opens onto the garden via French doors. The living room has a large window for a light and airy feel. To the first floor are the family bathroom and bedrooms, with an en-suite shower room to the master bedroom.

GROUND FLOOR

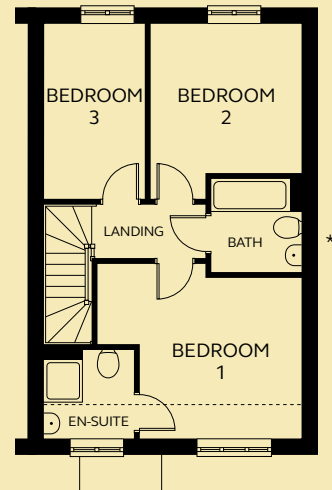
| | |
|----------------|---------------|
| Kitchen/Dining | 5.46m x 3.69m |
| Living Room | 3.12m x 4.96m |
| Cloakroom | 0.90m x 1.86m |

FIRST FLOOR

| | |
|-----------|----------------------|
| Bedroom 1 | 3.44 – 4.35m x 3.43m |
| En-suite | 1.90m x 1.90m |
| Bedroom 2 | 3.20m x 3.16m |
| Bedroom 3 | 2.13m x 3.71m |
| Bathroom | 1.93m x 2.00m |



GROUND FLOOR



FIRST FLOOR

----- Sloped ceiling in roof space.

* Window to selected plots.

Some plots have curved reveals to first floor windows. Please refer to Sales Executive for plot-specific details.

Floorplan shown is handed.

Devonshire Homes endeavours to provide accurate and reliable sales details in order to provide purchasers with a valid representation of the finished houses. However, during the process of construction, alterations may become necessary and various changes and improvements can occur. Dimensions should be used as a guide only and should not be used to order carpets or furniture and customers should satisfy themselves of the actual dimensions of the property they are purchasing. Elevations, materials, style and position of windows and porches can all differ in the same house type from plot to plot. Purchasers should ensure that they are aware of the detail and finish provided in a specific plot before committing to a purchase.

marinershaven@
devonshirehomes.co.uk