

# Mariner's Haven

Ilfracombe

COLLYBROOKE ARTS & CRAFTS

2





# COLLYBROOKE

ARTS & CRAFTS

## 2 FH

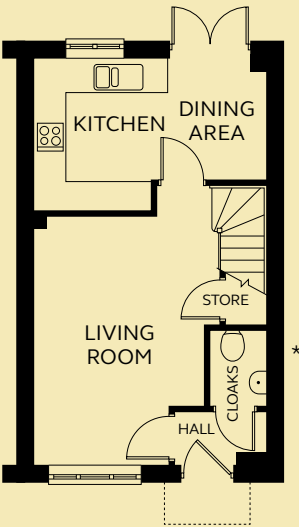
A well-designed two bedroom home with French doors opening onto the rear garden from the open plan kitchen and dining space. There is a spacious separate living room, and to the first floor are the family bathroom and bedrooms, with an en-suite shower room to the master.

GROUND FLOOR

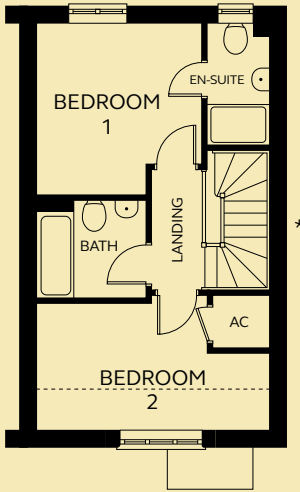
Kitchen/Dining	4.49m x 2.99m
Living Room	3.62m x 4.83m
Cloakroom	1.09m x 1.50m

FIRST FLOOR

Bedroom 1	3.20m x 3.34m
En-suite	1.20m x 2.37m
Bedroom 2	3.31 – 4.49m x 1.49 – 2.46m
Bathroom	2.12m x 1.92m



GROUND FLOOR



FIRST FLOOR

----- Sloped ceiling in roof space.

\* Window to selected plots.  
Please refer to Sales Executive  
for plot-specific details.

Devonshire Homes endeavours to provide accurate and reliable sales details in order to provide purchasers with a valid representation of the finished houses. However, during the process of construction, alterations may become necessary and various changes and improvements can occur. Dimensions should be used as a guide only and should not be used to order carpets or furniture and customers should satisfy themselves of the actual dimensions of the property they are purchasing. Elevations, materials, style and position of windows and porches can all differ in the same house type from plot to plot. Purchasers should ensure that they are aware of the detail and finish provided in a specific plot before committing to a purchase.