

# Mariner's Haven

Ilfracombe

LYNHER ARTS & CRAFTS



# Mariner's Haven

Ilfracombe



SINCE 1992

# DEVONSHIRE HOMES

## LYNHER ARTS & CRAFTS

### 3 FH

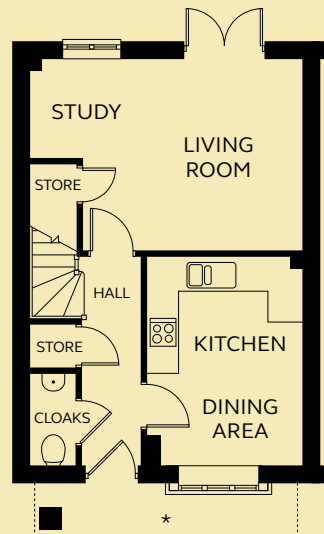
This three bedroom house enjoys an open plan kitchen and dining area, plus a versatile living room with study area and French doors opening onto the rear garden. Upstairs are the family bathroom and three bedrooms. The master bedroom benefits from an en-suite shower room.

#### GROUND FLOOR

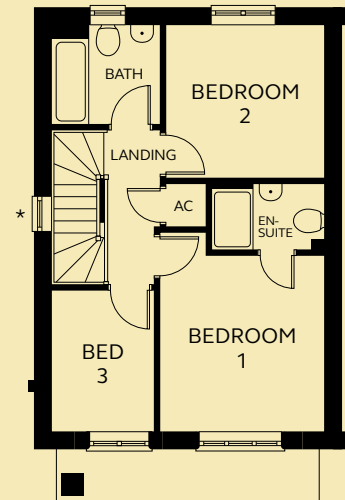
Kitchen/Dining	3.00m x 4.04m
Living Room / Study	4.29 – 5.28m x 1.95 – 3.72m
Cloakroom	0.90m x 1.80m

#### FIRST FLOOR

Bedroom 1	3.18m x 3.88m
En-suite	2.17m x 1.30m
Bedroom 2	3.06m x 2.99m
Bedroom 3	1.97m x 2.78m
Bathroom	2.09m x 1.94m



GROUND FLOOR



FIRST FLOOR

\* Porch configuration varies between plots. Window to selected plots. Please refer to Sales Executive for plot-specific details.

Devonshire Homes endeavours to provide accurate and reliable sales details in order to provide purchasers with a valid representation of the finished houses. However, during the process of construction, alterations may become necessary and various changes and improvements can occur. Dimensions should be used as a guide only and should not be used to order carpets or furniture and customers should satisfy themselves of the actual dimensions of the property they are purchasing. Elevations, materials, style and position of windows and porches can all differ in the same house type from plot to plot. Purchasers should ensure that they are aware of the detail and finish provided in a specific plot before committing to a purchase.

marinershaven@  
devonshirehomes.co.uk