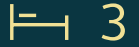


Mariner's Haven

Ilfracombe

TAMAR ARTS & CRAFTS



CGI shows plots 195 & 196, Tamar Formal style

Mariner's Haven

Ilfracombe



SINCE 1992

DEVONSHIRE HOMES

TAMAR ARTS & CRAFTS 3 FH

A three bedroom house with flexible living over three floors. The open plan kitchen and dining room has French doors opening onto the garden, and there's a separate utility plus a study. To the first floor, the living room has a Juliet balcony, and the master bedroom enjoys an en-suite shower room.

GROUND FLOOR

Kitchen/Dining	4.61m x 4.91m
Study	2.36m x 2.09m
Utility	2.35m x 1.29m
Cloakroom	0.86m x 2.06m

FIRST FLOOR

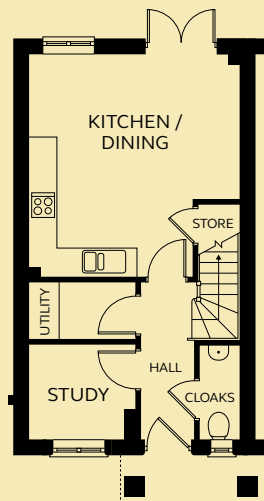
Living Room	4.61m x 3.21m
Bedroom 1	2.41 – 4.61m x 2.38 – 3.21m
Bathroom 1	2.47m x 2.13m

SECOND FLOOR

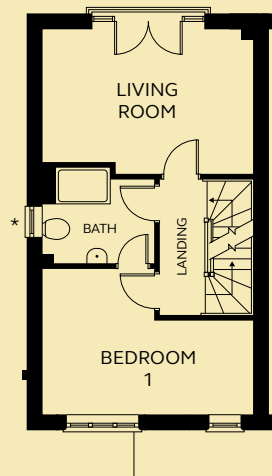
Bedroom 2	3.50m x 3.12m (excluding dormer space)
Bedroom 3	2.47m x 3.39m (excluding dormer space)
Bathroom 2	2.06m x 2.08m

* Window to plot 233 only.
Please refer to Sales Executive
for plot-specific details.

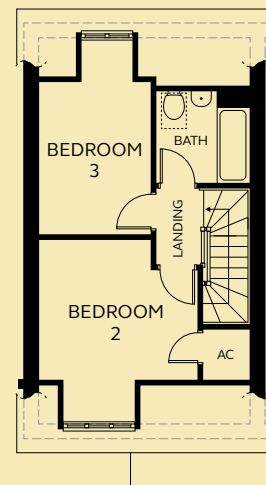
Roof light to Bathroom 2.



GROUND FLOOR



FIRST FLOOR



SECOND FLOOR

Devonshire Homes endeavours to provide accurate and reliable sales details in order to provide purchasers with a valid representation of the finished houses. However, during the process of construction, alterations may become necessary and various changes and improvements can occur. Dimensions should be used as a guide only and should not be used to order carpets or furniture and customers should satisfy themselves of the actual dimensions of the property they are purchasing. Elevations, materials, style and position of windows and porches can all differ in the same house type from plot to plot. Purchasers should ensure that they are aware of the detail and finish provided in a specific plot before committing to a purchase.

marinershaven@
devonshirehomes.co.uk