

# Mariner's Haven

Ilfracombe



SINCE 1992

# DEVONSHIRE HOMES

## TAMAR FORMAL

### 3 FH

A three bedroom house with flexible living over three floors. The open plan kitchen and dining room has French doors opening onto the garden, and there's a separate utility plus a study. To the first floor, the living room has a Juliet balcony, and the master bedroom enjoys an en-suite shower room. Two further bedrooms and family bathroom to the second floor.

#### GROUND FLOOR

Kitchen/Dining	4.60m x 4.91m
Study	2.34m x 2.09m
Utility	2.34m x 1.25m
Cloakroom	0.90m x 2.06m

#### FIRST FLOOR

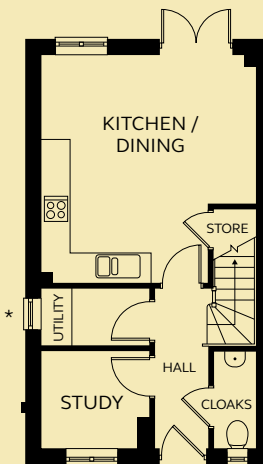
Living Room	4.60m x 3.21m
Bedroom 1	4.60m x 3.21m
En-suite	1.47m x 2.13m
Cloakroom	0.90m x 2.13m

#### SECOND FLOOR

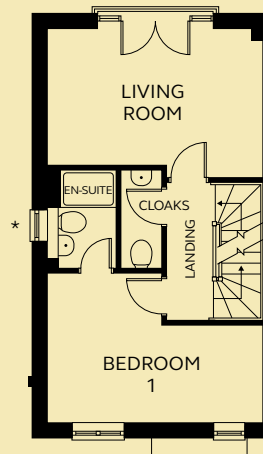
Bedroom 2	3.49m x 3.12m (excluding dormer space)
Bedroom 3	2.46m x 3.39m (excluding dormer space)
Bathroom	2.06m x 2.08m

\* Windows to plot 196 only.  
Please refer to Sales Executive  
for plot-specific details.

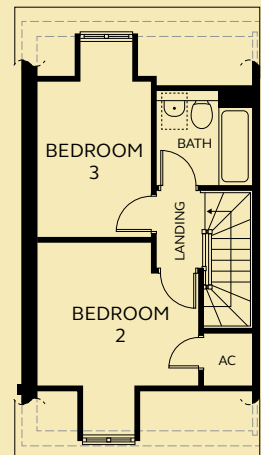
Roof light to Bathroom.



GROUND FLOOR



FIRST FLOOR



SECOND FLOOR

Devonshire Homes endeavours to provide accurate and reliable sales details in order to provide purchasers with a valid representation of the finished houses. However, during the process of construction, alterations may become necessary and various changes and improvements can occur. Dimensions should be used as a guide only and should not be used to order carpets or furniture and customers should satisfy themselves of the actual dimensions of the property they are purchasing. Elevations, materials, style and position of windows and porches can all differ in the same house type from plot to plot. Purchasers should ensure that they are aware of the detail and finish provided in a specific plot before committing to a purchase.

marinershaven@  
devonshirehomes.co.uk