

Mariner's Haven
Ilfracombe

TORRIDGE
4



Mariner's Haven

Ilfracombe



SINCE 1992

DEVONSHIRE HOMES

TORRIDGE

4 FH

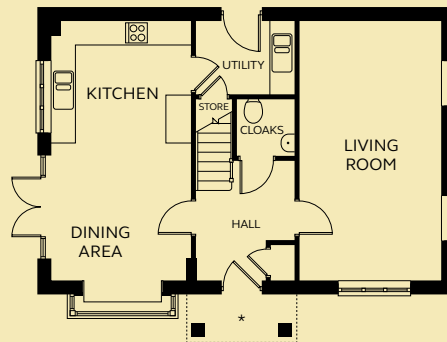
A spacious four bedroom house with an open plan kitchen and dining area enjoying a box bay window. Light and airy dual aspect living room. Light and airy dual aspect living room, plus a separate utility room. Four bedrooms and a family bathroom on the first floor, master bedroom benefiting from a box bay window, en-suite shower room and fitted wardrobe.

GROUND FLOOR

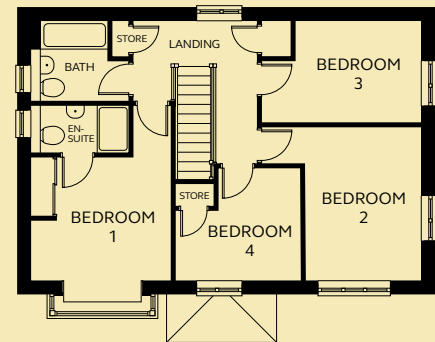
Kitchen/Dining	3.47m x 6.49m (excluding bay window)
Living Room	3.53m x 6.49m
Utility	2.47m x 1.85m
Cloakroom	1.46m x 1.46m

FIRST FLOOR

Bedroom 1	3.53m x 3.10-4.39m (excluding bay window)
En-suite	2.45m x 1.20m
Bedroom 2	2.90-3.99m x 3.85m
Bedroom 3	3.16-3.99m x 1.55-2.55m
Bedroom 4	2.08-3.07m x 1.76-2.82m
Bathroom	2.45m x 2.01m



GROUND FLOOR



FIRST FLOOR

* Plot 214 is handed to floorplan shown and has a stepped approach. Please refer to Sales Executive for plot-specific details.

Devonshire Homes endeavours to provide accurate and reliable sales details in order to provide purchasers with a valid representation of the finished houses. However, during the process of construction, alterations may become necessary and various changes and improvements can occur. Dimensions should be used as a guide only and should not be used to order carpets or furniture and customers should satisfy themselves of the actual dimensions of the property they are purchasing. Elevations, materials, style and position of windows and porches can all differ in the same house type from plot to plot. Purchasers should ensure that they are aware of the detail and finish provided in a specific plot before committing to a purchase.

marinershaven@
devonshirehomes.co.uk