

Mariner's Haven

Ilfracombe

YEALM ARTS & CRAFTS



Mariner's Haven

Ilfracombe



SINCE 1992

DEVONSHIRE HOMES

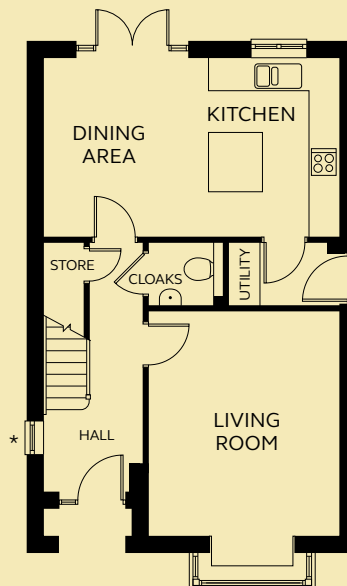
YEALM ARTS & CRAFTS

4 FH

This four bedroom house features a spacious open plan kitchen and dining area, with French doors opening on the garden. The living room enjoys a box bay window, as does the master bedroom which also benefits from an en-suite shower room. There are three further bedrooms and a family bathroom.

GROUND FLOOR

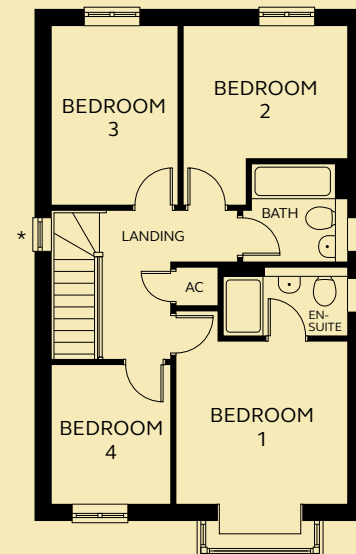
Kitchen/Dining	5.99m x 3.60m
Living Room	3.85m x 4.60m (excluding bay window)
Utility	2.25m x 1.29m
Cloakroom	1.51m x 1.29m



GROUND FLOOR

FIRST FLOOR

Bedroom 1	3.46m x 3.94m (excluding bay window)
En-suite	2.50m x 1.40m
Bedroom 2	3.35m x 3.62m
Bedroom 3	2.55m x 3.62m
Bedroom 4	2.40m x 2.82m
Bathroom	2.12m x 2.00m



FIRST FLOOR

* No window to plot 241.
Please refer to Sales Executive
for plot-specific details.

Devonshire Homes endeavours to provide accurate and reliable sales details in order to provide purchasers with a valid representation of the finished houses. However, during the process of construction, alterations may become necessary and various changes and improvements can occur. Dimensions should be used as a guide only and should not be used to order carpets or furniture and customers should satisfy themselves of the actual dimensions of the property they are purchasing. Elevations, materials, style and position of windows and porches can all differ in the same house type from plot to plot. Purchasers should ensure that they are aware of the detail and finish provided in a specific plot before committing to a purchase.

marinershaven@
devonshirehomes.co.uk