



CGI shows Plot 35

PORTMORE 5 FH

An impressive 5 bed home with the flexibility to provide a large open plan kitchen/dining/living area, or a separate enclosed living room. Folding doors open onto the rear garden.

GROUND FLOOR

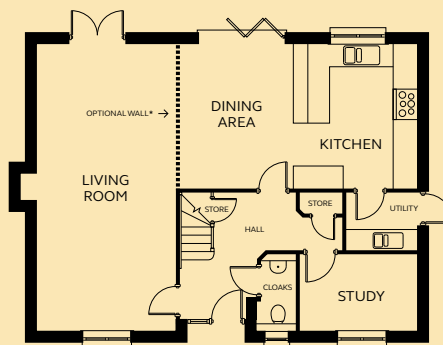
| | |
|----------------|---------------|
| Kitchen/Dining | 6.64m x 3.97m |
| Living Room | 3.79m x 7.95m |
| Utility | 1.96m x 1.69m |
| Study | 3.22m x 2.10m |
| Cloakroom | 0.96m x 1.91m |

FIRST FLOOR

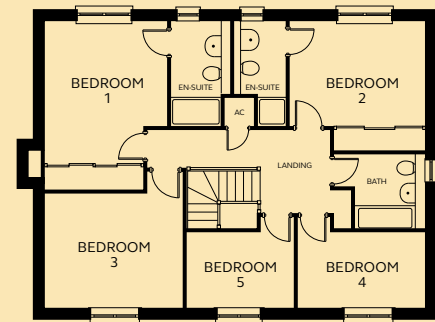
| | |
|-----------|--|
| Bedroom 1 | 2.74 – 3.40m x 2.89 – 4.67m (inc wardrobe space) |
| En-suite | 1.40 – 1.67m x 2.89m |
| Bedroom 2 | 2.50 – 3.73m x 2.89 – 3.61m (inc wardrobe space) |
| En-suite | 0.80 – 1.45m x 1.99 – 2.89m |
| Bedroom 3 | 3.85m x 3.18m |
| Bedroom 4 | 2.69 – 3.52m x 2.10 – 2.53m |
| Bedroom 5 | 2.07 – 2.98m x 2.10 – 2.53m |
| Bathroom | 1.93 – 2.50m x 2.05m |

* Wall depending on build stage.

GROUND FLOOR



FIRST FLOOR



**DEVON
SHIRE
HOMES**



Mazzard View
Landkey

01271 322584
devonshirehomes.co.uk

Floorplans and dimensions should be used as a guide only. Please visit: devonshirehomes.co.uk/t-cs-disclaimer