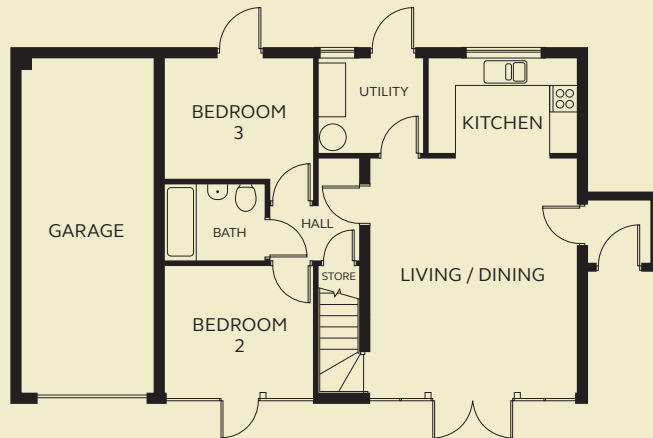


# TAPELY

## 3 FH

### GROUND FLOOR

Living / Dining	4.61m x 5.22m
Kitchen	3.31m x 2.11m
Bedroom 2	3.30m x 2.83m
Bedroom 3	3.30m x 2.96m
Bathroom	2.23m x 1.70m
Utility	2.33m x 2.11m
Garage	2.95m x 7.46m

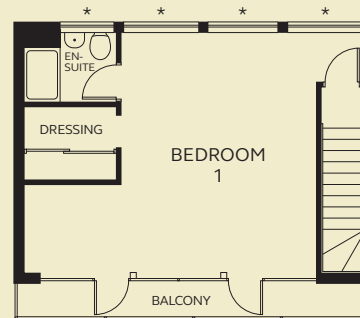


A stylish and functional three bedroom home, with integral garage and separate utility room. The open-plan kitchen and living area opens onto the south-facing garden, as does one of the ground floor bedrooms. Upstairs, the spacious master bedroom has a balcony, en-suite and dressing room.

### FIRST FLOOR

Bedroom 1	6.51m x 5.35m
En-suite	2.05m x 1.54m
Dressing	2.05m x 1.62m

Kitchen layout and location of air source heat pump will be provided by Sales Executive.



\* High level windows



Sun Houses  
Yelland

01271 444005  
[devonshirehomes.co.uk](http://devonshirehomes.co.uk)

Floorplans and dimensions should be used as a guide only. Please visit: [devonshirehomes.co.uk/t-cs-disclaimer](http://devonshirehomes.co.uk/t-cs-disclaimer)