

The Grange

Bideford

DARTMOUTH

3



The Grange

Bideford



SINCE 1992

DEVONSHIRE HOMES

DARTMOUTH 3 FH

Creative use of space and glazing combine to give a light and airy feel. The open plan ground floor accommodation benefits from French doors which lead onto the rear garden. The master bedroom includes an en-suite shower room and fitted wardrobes.

GROUND FLOOR

Living/Dining	4.92m x 5.25m *
Kitchen/Dining	7.60m x 2.47m *
Cloakroom	1.66m x 2.64m

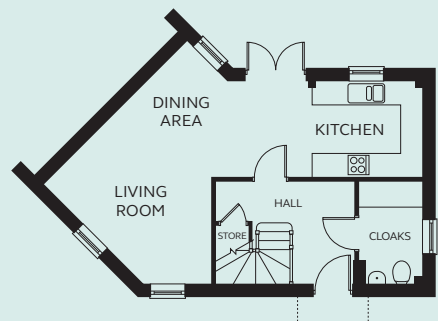
FIRST FLOOR

Bedroom 1	3.30m x 3.23m (exc wardrobe space)
En-suite	2.41m x 1.40 – 2.04m
Bedroom 2	3.63m x 3.29m *
Bedroom 3	3.20m x 2.58m *
Bathroom	2.15m x 1.90m

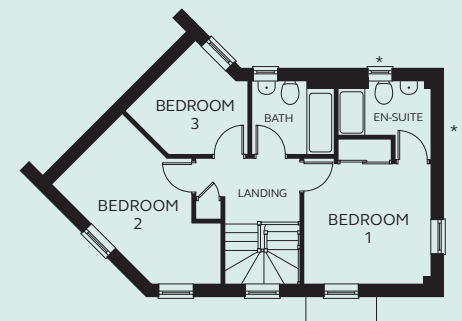
* Splayed room

* Window configuration varies between plots (plot 35 shown). Please refer to Sales Executive for plot-specific details.

NB: Floorplan shown is handed.



GROUND FLOOR



FIRST FLOOR

Devonshire Homes endeavours to provide accurate and reliable sales details in order to provide purchasers with a valid representation of the finished houses. However, during the process of construction, alterations may become necessary and various changes and improvements can occur. Dimensions should be used as a guide only and should not be used to order carpets or furniture and customers should satisfy themselves of the actual dimensions of the property they are purchasing. Elevations, materials, style and position of windows and porches can all differ in the same house type from plot to plot. Purchasers should ensure that they are aware of the detail and finish provided in a specific plot before committing to a purchase.

thegrange@
devonshirehomes.co.uk