

# The Grange

Bideford

SAUNTON

4



# The Grange

Bideford



SINCE 1992

# DEVONSHIRE HOMES

## SAUNTON

### 4 FH

This well-proportioned four bedroom house has an open plan kitchen/dining area and separate utility. The spacious living room opens onto the garden via French doors. To the first floor the master bedroom benefits from fitted wardrobes and en-suite shower room. There are three further bedrooms and a family bathroom.

#### GROUND FLOOR

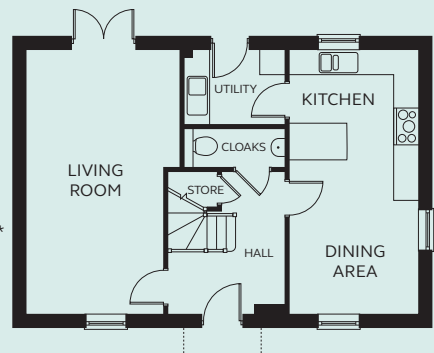
Kitchen/Dining	3.15m x 6.49m
Living Room	3.35 – 3.75m x 6.49m
Utility	2.44m x 1.83m
Cloakroom	2.40m x 0.95m

#### FIRST FLOOR

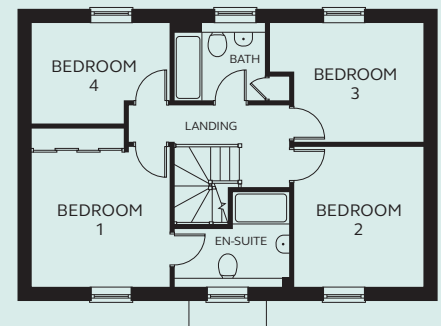
Bedroom 1	3.41m x 3.91m (inc wardrobe space)
En-suite	2.84m x 1.44 – 2.34m
Bedroom 2	3.18m x 3.46m
Bedroom 3	3.78m x 2.94m
Bedroom 4	3.40m x 2.49m
Bathroom	2.25m x 1.92m

\* Window configuration varies between plots (plot 18 shown). Please refer to Sales Executive for plot-specific details.

NB: Floorplan shown is handed.



GROUND FLOOR



FIRST FLOOR

Devonshire Homes endeavours to provide accurate and reliable sales details in order to provide purchasers with a valid representation of the finished houses. However, during the process of construction, alterations may become necessary and various changes and improvements can occur. Dimensions should be used as a guide only and should not be used to order carpets or furniture and customers should satisfy themselves of the actual dimensions of the property they are purchasing. Elevations, materials, style and position of windows and porches can all differ in the same house type from plot to plot. Purchasers should ensure that they are aware of the detail and finish provided in a specific plot before committing to a purchase.

thegrange@  
devonshirehomes.co.uk