

The Grange

Bideford

SILVERTON

5



The Grange

Bideford



SINCE 1992

DEVONSHIRE HOMES

SILVERTON

5 FH

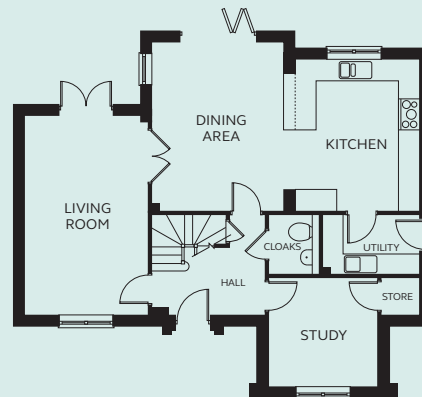
An impressive five bedroom house with an open plan kitchen/dining area that leads to the garden via folding doors. The separate living room additionally opens onto the garden, and a study and utility room make this a well-functioning home. To the first floor is the family bathroom and five bedrooms, two of which benefit from fitted wardrobes and en-suite shower room.

GROUND FLOOR

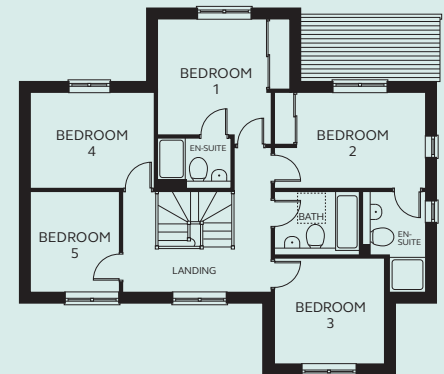
Kitchen	3.60m x 4.40m
Dining	3.83m x 4.90m
Living Room	3.58m x 5.80m
Study	3.20m x 3.18m
Utility	2.81m x 1.74m
Cloakroom	1.50m x 1.74m

FIRST FLOOR

Bedroom 1	3.31 – 3.83m x 3.37m (inc wardrobe space)
En-suite 1	2.14m x 1.47m
Bedroom 2	4.40m x 2.78m (inc wardrobe space)
En-suite 2	1.83m x 2.90m
Bedroom 3	3.20m x 3.08m
Bedroom 4	3.60m x 2.81m
Bedroom 5	2.59m x 2.90m
Bathroom	2.49m x 1.84m



GROUND FLOOR



FIRST FLOOR

NB: Floorplan shown is handed.
Velux roof light to Bathroom.

Devonshire Homes endeavours to provide accurate and reliable sales details in order to provide purchasers with a valid representation of the finished houses. However, during the process of construction, alterations may become necessary and various changes and improvements can occur. Dimensions should be used as a guide only and should not be used to order carpets or furniture and customers should satisfy themselves of the actual dimensions of the property they are purchasing. Elevations, materials, style and position of windows and porches can all differ in the same house type from plot to plot. Purchasers should ensure that they are aware of the detail and finish provided in a specific plot before committing to a purchase.

thegrange@
devonshirehomes.co.uk