

Gwallon Keas
St Austell

PORTMORE
5



Gwallon Keas

St Austell



SINCE 1992

DEVON
SHIRE
HOMES

PORTMORE 5 FH

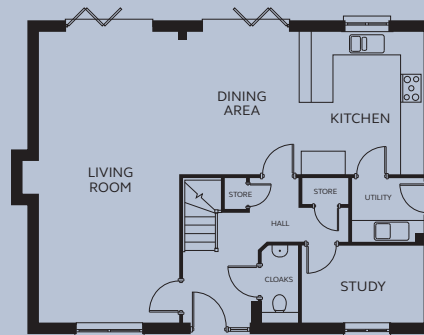
The Portmore is an impressive five-bedroom executive home that enjoys a dramatic open plan living area, ideal for entertaining. It includes a working chimney, suitable for a woodburner (not supplied). There are 2 sets of bifold doors connecting to the rear garden, and bedrooms 1 and 2 both benefit from en-suites and fitted wardrobes.

GROUND FLOOR

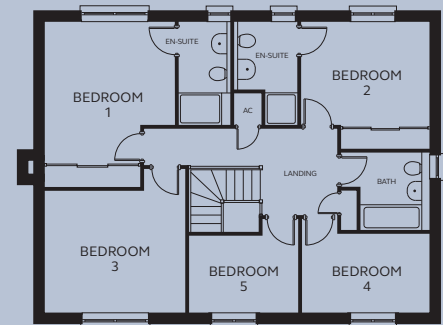
Kitchen/Living/Dining	3.81 – 10.54m x 3.87 – 7.95m
Utility	1.95m x 1.78m
Study	3.29m x 2.10m
Cloakroom	0.98m x 2.10m

FIRST FLOOR

Bedroom 1	2.61 – 3.56m x 2.82 – 4.53m (inc wardrobe space)
En-suite	1.43m x 2.82m
Bedroom 2	2.41 – 3.51m x 2.82 – 3.47m (inc wardrobe space)
En-suite	0.90 – 1.76m x 1.83 – 2.82m
Bedroom 3	2.70 – 3.81m x 3.33 – 3.93m
Bedroom 4	2.50 – 3.49m x 2.15 – 2.56m
Bedroom 5	1.98 – 2.99m x 2.10 – 2.56m
Bathroom	1.88 – 2.41m x 1.18 – 2.15m



GROUND FLOOR



FIRST FLOOR

Devonshire Homes endeavours to provide accurate and reliable sales details in order to provide purchasers with a valid representation of the finished houses. However, during the process of construction, alterations may become necessary and various changes and improvements can occur. Dimensions should be used as a guide only and should not be used to order carpets or furniture and customers should satisfy themselves of the actual dimensions of the property they are purchasing. Elevations, materials, style and position of windows and porches can all differ in the same house type from plot to plot. Purchasers should ensure that they are aware of the detail and finish provided in a specific plot before committing to a purchase.

[gwallonkeas@
devonshirehomes.co.uk](mailto:gwallonkeas@devonshirehomes.co.uk)