

Tarka View
Crediton

MARSHALL
E4 3



CGI shows plot 132

Tarka View

Crediton



SINCE 1992

DEVONSHIRE HOMES

MARSHALL

3 FH

This elegant home enjoys a spacious feel with 3 good-sized bedrooms, one of which is en-suite. Two sets of French doors lead to the garden from both the living and dining areas.

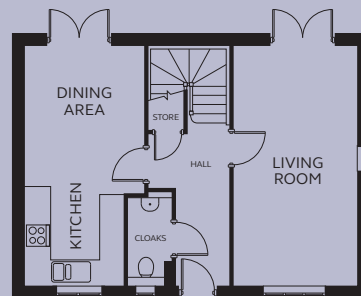
GROUND FLOOR

Kitchen/Dining	2.40 – 2.86m x 3.62 – 5.81m
Living Room	2.96m x 5.81m
Cloakroom	0.90 – 1.04m x 2.11m

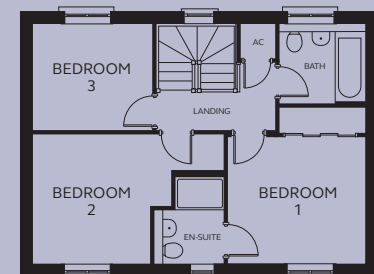
FIRST FLOOR

Bedroom 1	3.32m x 3.13 – 3.79m (inc wardrobe space)
En-suite	1.20 – 1.71m x 1.28 – 2.08m
Bedroom 2	2.85 – 4.65m x 1.76 – 3.13m
Bedroom 3	2.92m x 2.59m
Bathroom	2.07m x 1.88 – 1.94m

Positioning, style and width of some windows will vary between plots, please refer to your Sales Executive.



GROUND FLOOR



FIRST FLOOR

Devonshire Homes endeavours to provide accurate and reliable sales details in order to provide purchasers with a valid representation of the finished houses. However, during the process of construction, alterations may become necessary and various changes and improvements can occur. Dimensions should be used as a guide only and should not be used to order carpets or furniture and customers should satisfy themselves of the actual dimensions of the property they are purchasing. Elevations, materials, style and position of windows and porches can all differ in the same house type from plot to plot. Purchasers should ensure that they are aware of the detail and finish provided in a specific plot before committing to a purchase.

tarkaview@devonshirehomes.co.uk