

Gwallon Keas
St Austell

TRETHOWEL
E 3



CGI shows plot 19



TRETHOWEL

3 FH

A split-level home with a spacious living and dining area on the lower ground floor that opens onto the garden. All three bedrooms are well-proportioned, one of which is located on the first floor.

LOWER GROUND FLOOR

Living/Dining 3.79 – 5.81m x 3.71 – 6.39m

GROUND FLOOR

Kitchen 2.45m x 3.91m

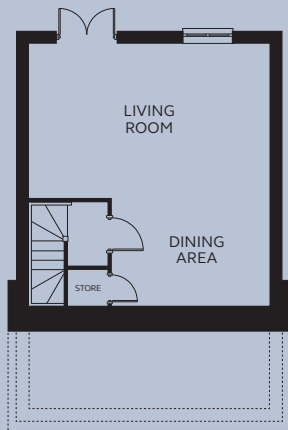
Bedroom 1 2.98 – 3.27m x 2.49 – 3.75m (inc wardrobe space)

Bedroom 2 2.45 – 2.74m x 2.40 – 4.84m

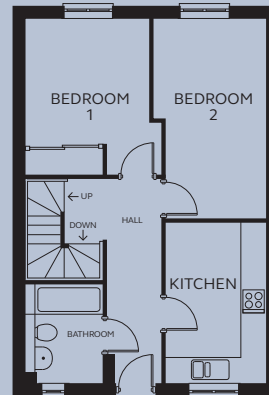
Bathroom 1.87m x 2.35m

FIRST FLOOR

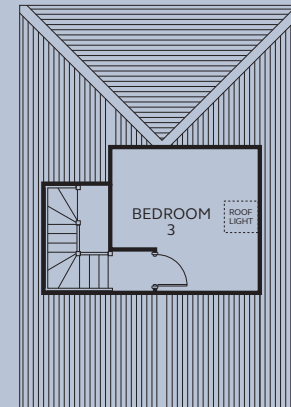
Bedroom 3 2.45 – 3.53m x 2.40 – 3.46m



LOWER GROUND FLOOR



GROUND FLOOR



FIRST FLOOR