



CGI shows Plot 6

# DAWSON 4

The separate study offers the ideal space to complement the light and airy open plan ground floor living areas. The central island unit creates a dramatic focal point in the kitchen.

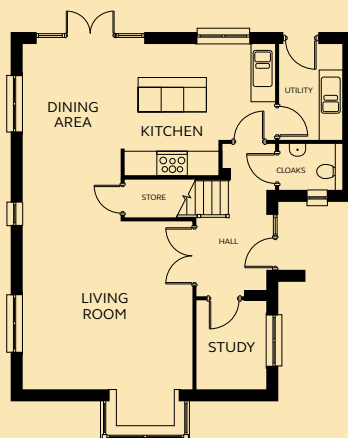
## GROUND FLOOR

Kitchen/Dining	6.60m x 3.42m
Living Room	2.54 – 4.42m x 4.37 – 6.50m
Utility	1.65m x 2.51m
Study	1.80m x 2.34m
Cloakroom	1.65m x 1.18m

## FIRST FLOOR

Bedroom 1	1.90 – 3.51m x 3.10 – 4.46m (inc wardrobe space)
En-suite	1.09 – 1.80m x 1.26 – 2.31m
Bedroom 2	3.51m x 3.48m
Bedroom 3	2.77m x 3.41m
Bedroom 4	2.77m x 2.40m
Bathroom	1.70m x 2.23m

## GROUND FLOOR



## FIRST FLOOR

