



CGI shows Plot 19

MAZZARD 5

A large prestigious home featuring a range of living spaces including a dramatic open plan kitchen/family area with folding doors to the garden. Two of the 5 bedrooms enjoy en-suites.

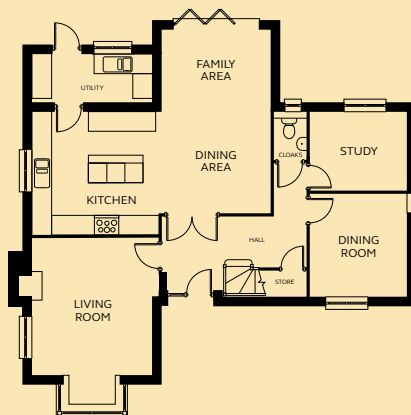
GROUND FLOOR

Kitchen	4.27m x 4.00m
Dining/Family	3.56m x 5.99m
Dining Room	3.20m x 3.34m
Living Room	3.90 – 4.13m x 4.47 – 5.48m
Utility	3.90m x 1.54m
Study	2.57m x 2.55m
Cloakroom	1.68m x 1.48m

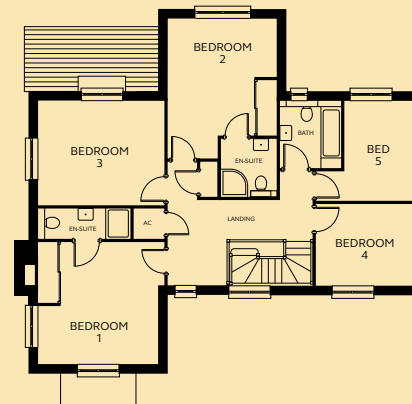
FIRST FLOOR

Bedroom 1	3.90m x 3.98m (inc wardrobe space)
En-suite 1	3.04m x 1.01m
Bedroom 2	1.95 – 3.56m x 3.84 – 4.59m (inc wardrobe space)
En-suite 2	1.86m x 1.91m
Bedroom 3	4.14m x 3.44m
Bedroom 4	3.20m x 2.64m
Bedroom 5	2.25 – 3.20m x 2.30 – 3.30m
Bathroom	2.06m x 2.20m

GROUND FLOOR



FIRST FLOOR



**DEVON
SHIRE
HOMES**



Mazzard View
Landkey

01271 322584
devonshirehomes.co.uk

Floorplans and dimensions should be used as a guide only. Please visit: devonshirehomes.co.uk/t-cs-disclaimer