



CGI shows Plot 21

SOUTHALL

4

A well-proportioned 4 bed house with a large open plan kitchen/dining area and a separate utility room with external access. Two sets of French doors open onto the garden.

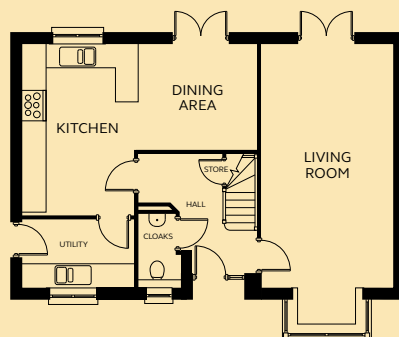
GROUND FLOOR

Kitchen/Dining	2.90 – 6.15m x 2.75 – 4.52m
Living Room	3.45m x 6.38 – 7.40m
Utility	2.90m x 1.76m
Cloakroom	0.96m x 1.91m

FIRST FLOOR

Bedroom 1	3.51m x 3.60m (inc wardrobe space)
En-suite	1.57 – 3.11m x 1.46 – 2.34m
Bedroom 2	2.87m x 3.36m
Bedroom 3	2.78 – 3.44m x 1.81 – 2.92m
Bedroom 4	2.36 – 3.49m x 1.87 – 2.68m
Bathroom	2.32 – 2.63m x 1.11 – 1.87m

GROUND FLOOR



FIRST FLOOR

