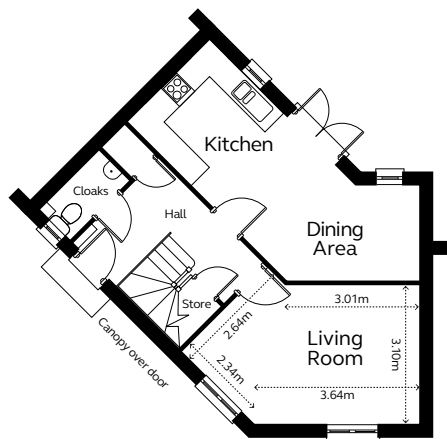


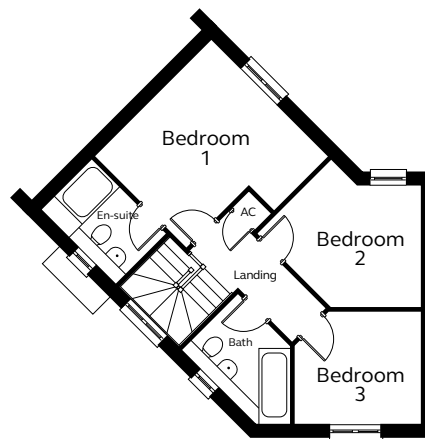


Typical CGI, not site specific.

## GROUND FLOOR



## FIRST FLOOR



A delightful three bedroom house with a separate living room, an open plan kitchen / dining room with French doors to the rear garden. There is also a cloakroom and two storage cupboards on the ground floor.

Upstairs there are three bedrooms, and a family bathroom; the master bedroom has an en-suite shower room.

### Ground Floor

Kitchen / Dining Area  
5.00m (max) 4.59m (min) x 2.56m x 2.95m (max) 1.42m (min) x 2.10m

Living Room  
3.64m x 3.10m x 3.01m x 2.64m x 2.34m

Cloakroom  
0.90m x 1.81m

### First Floor

Bedroom 1  
3.67m (max) 2.85m (min) x 3.71m (max) 1.71m (min) incl. wardrobe

En-suite  
2.28m x 1.54m

Bedroom 2  
2.65m (max) 1.07m (min) x 3.63m (max) 2.89m (min) incl. wardrobe

Bedroom 3  
2.86m (max) 2.04m (min) x 2.50m (max) 1.71m (min)

Bathroom  
1.73m (max) 1.71m (min) x 1.69m (max) 0.69m (min)

Please note  
Kitchen layouts are indicative only, please talk to us for details.