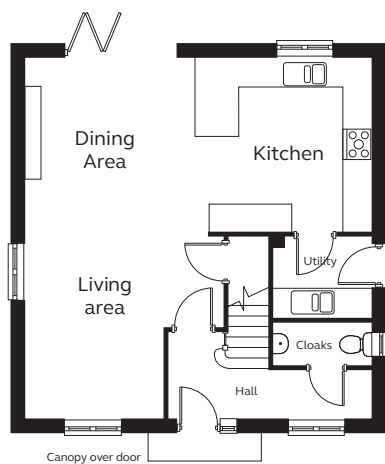


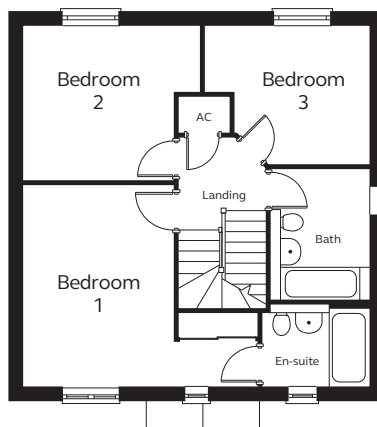


Typical CGI, not site specific.

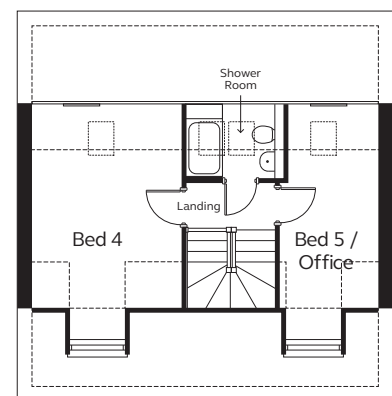
GROUND FLOOR



FIRST FLOOR



SECOND FLOOR



A spacious townhouse which offers flexible living over three floors. From the hallway enter the open plan kitchen/dining/living room or cloakroom. There is also a separate utility room with a door to the rear garden.

The first floor has three bedrooms and a family bathroom. The master bedroom benefits from an en-suite and fitted wardrobes in a dressing area. The top floor has two more bedrooms and a shower room.

Ground Floor

Kitchen / Dining Area
7.40m x 3.70m
Living area
3.85m x 4.25m (max)
2.93m (min)
Utility
2.05m x 1.69m
Cloakroom
0.90m x 2.08m

First Floor

Bedroom 1
5.03m (max) 3.19m (min) x 4.29m (max)
1.54m (min) incl. wardrobe space
En-suite
2.28m x 1.74m
Bedroom 2
3.81m (max) 3.19m (min) x 3.31m (max)
1.43m (min)
Bedroom 3
3.49m (max) 2.88m (min) x 2.90m (max)
1.43m (min)
Bathroom
2.09m x 2.87m

Second Floor

Bedroom 4
3.19m x 4.40m excl dormer window space
Shower Room
2.11m x 1.62m
Bedroom 5 / Office
2.09m (max) 1.93m (min) x 4.40m excl dormer window space

Please note
Kitchen layouts are indicative only, please talk to us for details.